

RIXOS

DUBAI ISLANDS
HOTEL & RESIDENCES

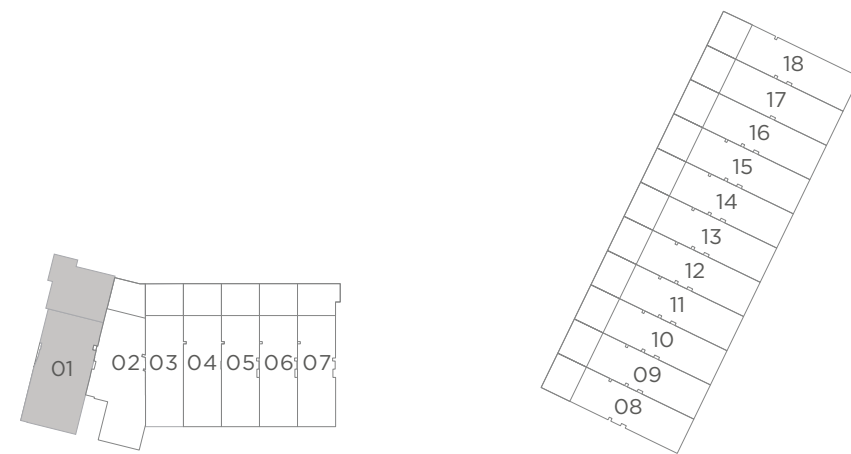
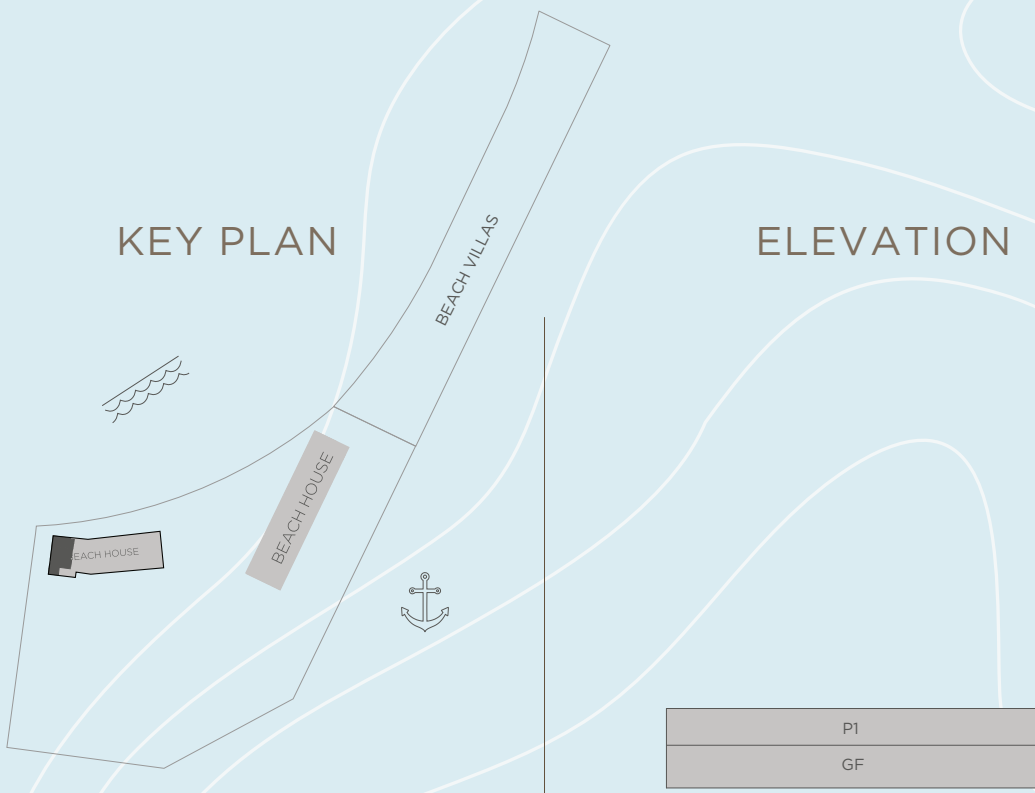
NAKHEEL

FLOOR PLANS | APARTMENT RESIDENCES

BEACH HOUSES

3 BEDROOM
 LEVEL G UNIT 01

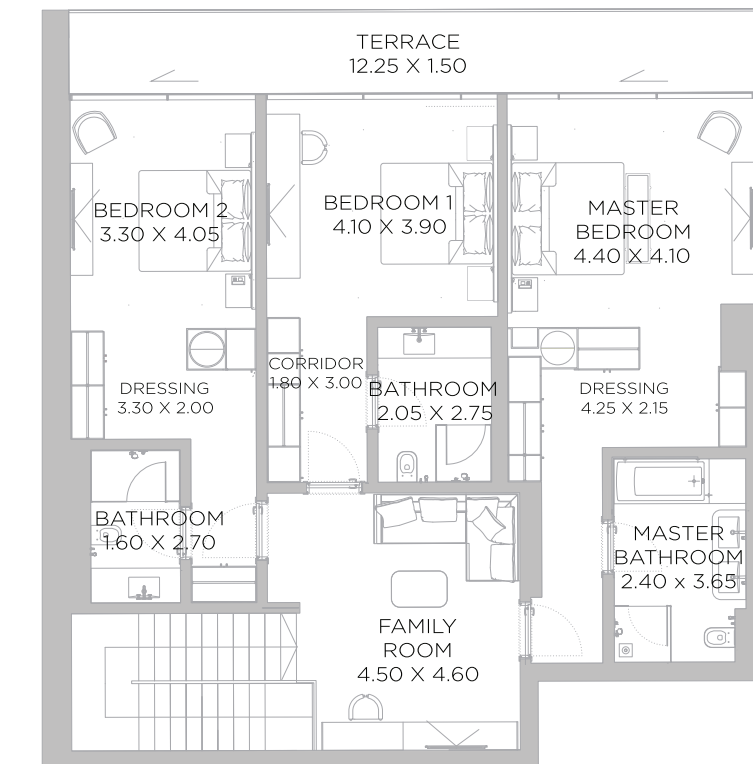
SUITE AREA	4938	SQ.FT	458.71	SQ.M.
BALCONY AREA	1820	SQ.FT	169.16	SQ.M.
TOTAL AREA	6758	SQ.FT	627.87	SQ.M.



GROUND FLOOR PLAN



GROUND FLOOR



PODIUM 1

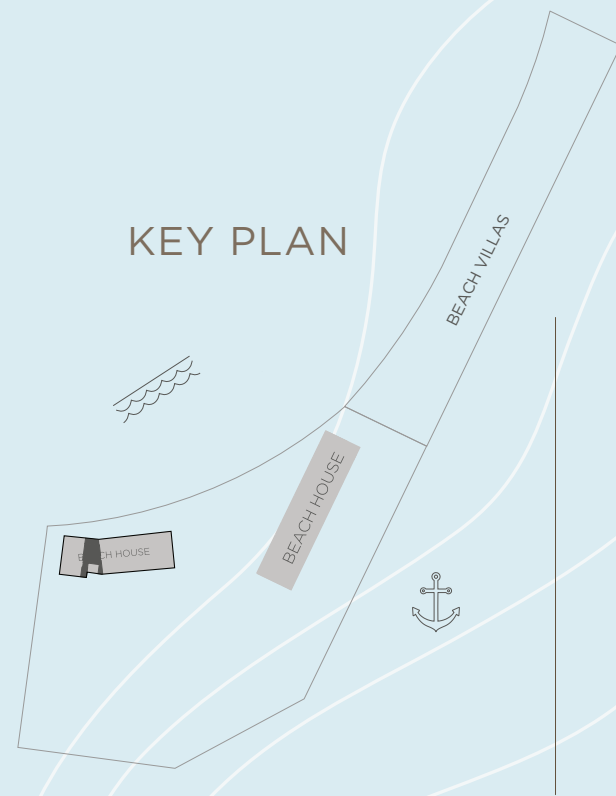
DISCLAIMER: All measurements, dimensions, coordinates and drawings, given as the Floor Plans in the literature are approximate and provided only for the purpose of marketing, illustration, information and general guidance as such drawings are not to scale. All the rooms, sizes, locations, orientations, dimensions, fixtures, fittings, finishes and specifications (including materials for, placement, size of rooms, windows, doors, balcony, furniture's inbuilt wardrobe etc.) provided in the floor plans may vary as the same have been taken from concept designs prior the actual development/construction and therefore their accuracy in relation to actual construction cannot be confirmed. Hence, we make no guarantee, warranty or representation as to the accuracy and completeness of the floor plan information as changes may be made during the development process, without notice. Always refer to latest IFC design available in the sales office for the most accurate representation of all construction details.

BEACH HOUSES

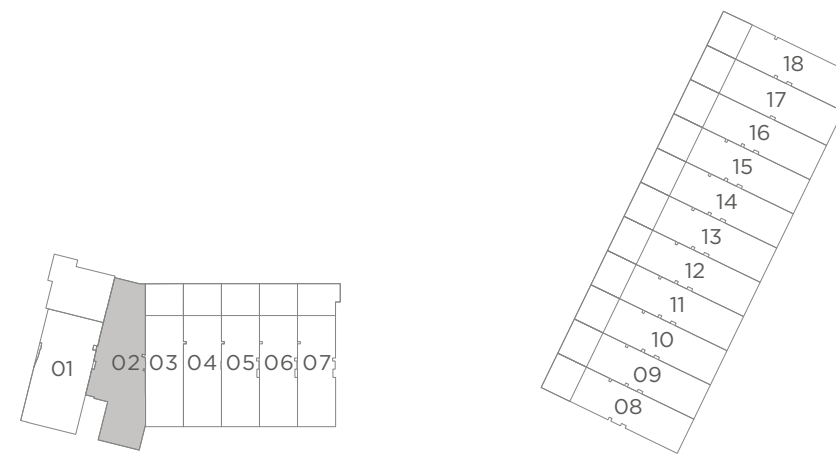
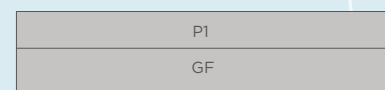
2 BEDROOM
LEVEL G UNIT 02

SUITE AREA	4424	SQ.FT	411.03	SQ.M.
BALCONY AREA	739	SQ.FT	68.64	SQ.M.
TOTAL AREA	5163	SQ.FT	479.67	SQ.M.

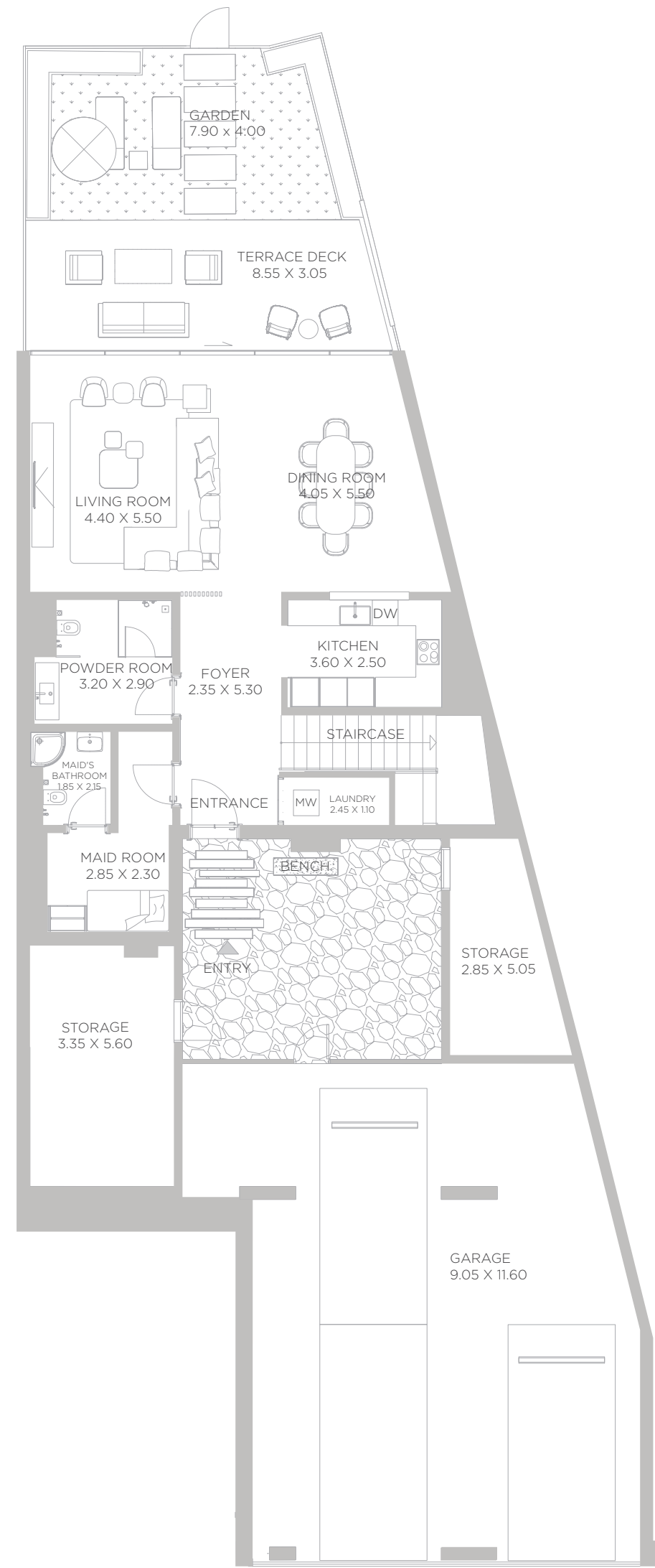
KEY PLAN



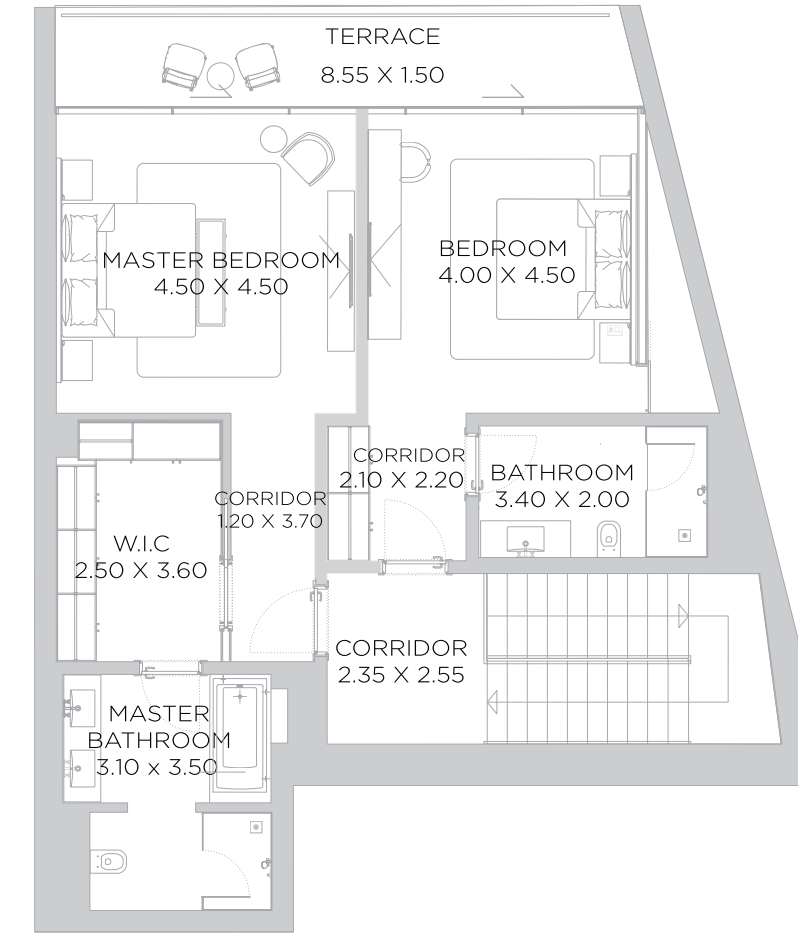
ELEVATION



GROUND FLOOR PLAN



GROUND FLOOR



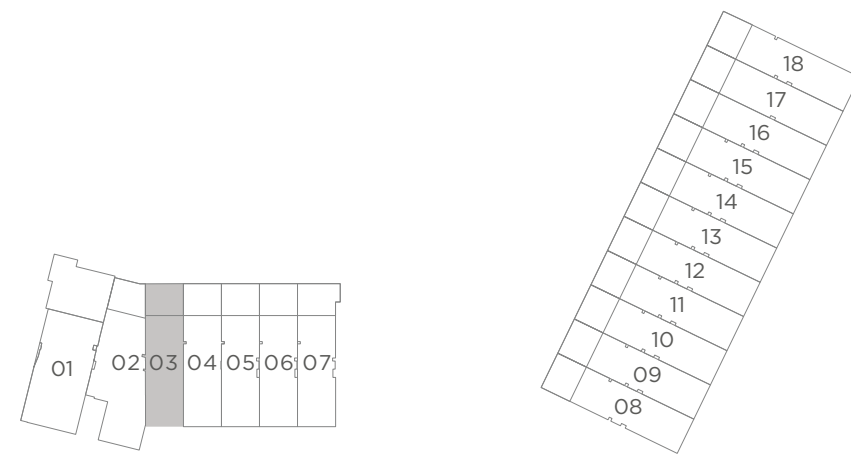
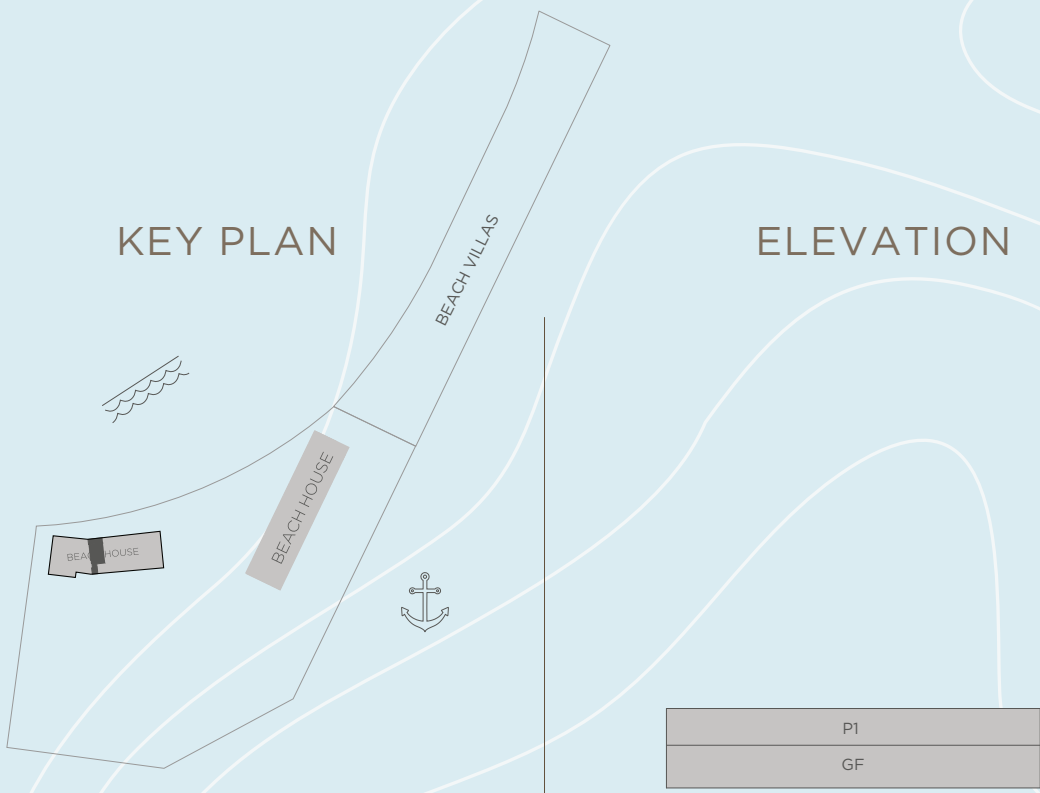
PODIUM 1

DISCLAIMER: All measurements, dimensions, coordinates and drawings, given as the Floor Plans in the literature are approximate and provided only for the purpose of marketing, illustration, information and general guidance as such drawings are not to scale. All the rooms, sizes, locations, orientations, dimensions, fixtures, fittings, finishes and specifications (including materials for, placement, size of rooms, windows, doors, balcony, furniture's inbuilt wardrobe etc.) provided in the floor plans may vary as the same have been taken from concept designs prior the actual development/construction and therefore their accuracy in relation to actual construction cannot be confirmed. Hence, we make no guarantee, warranty or representation as to the accuracy and completeness of the floor plan information as changes may be made during the development process, without notice. Always refer to latest IFC design available in the sales office for the most accurate representation of all construction details.

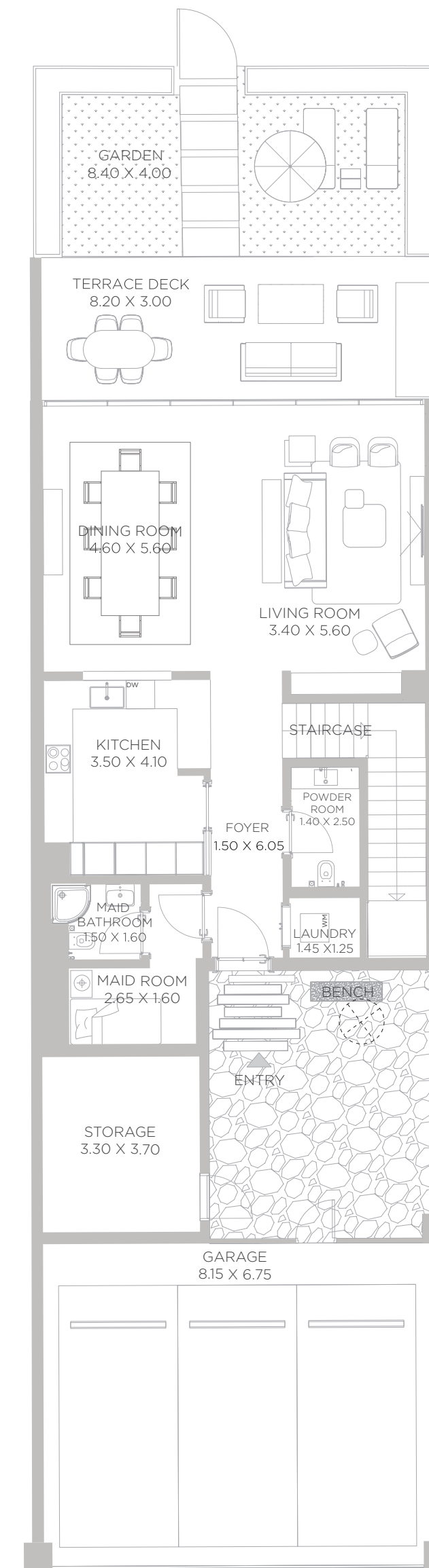
BEACH HOUSES

2 BEDROOM
 LEVEL G UNIT 03

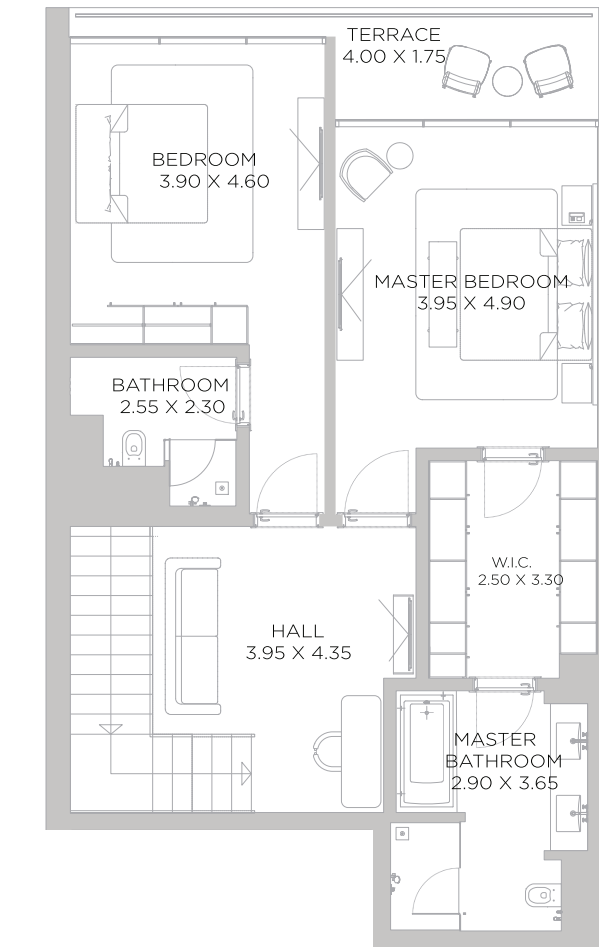
SUITE AREA	3284	SQ.FT	305.09	SQ.M.
BALCONY AREA	729	SQ.FT	67.71	SQ.M.
TOTAL AREA	4013	SQ.FT	372.80	SQ.M.



GROUND FLOOR PLAN



GROUND FLOOR



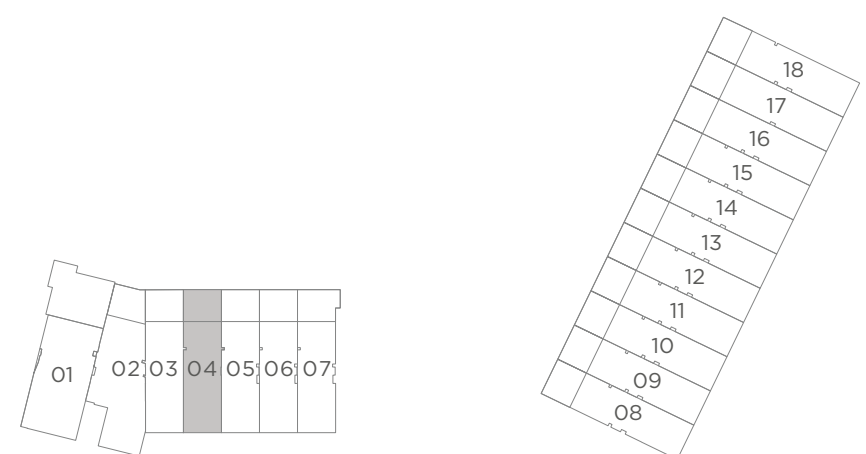
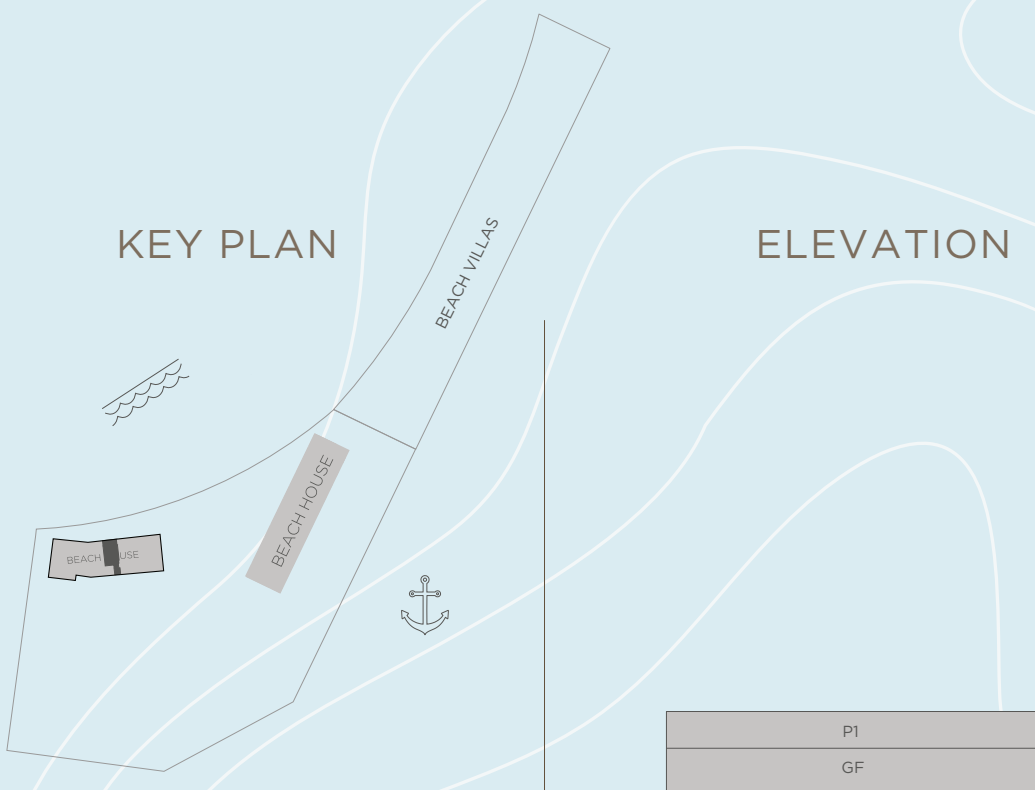
PODIUM 1

DISCLAIMER: All measurements, dimensions, coordinates and drawings, given as the Floor Plans in the literature are approximate and provided only for the purpose of marketing, illustration, information and general guidance as such drawings are not to scale. All the rooms, sizes, locations, orientations, dimensions, fixtures, fittings, finishes and specifications (including materials for, placement, size of rooms, windows, doors, balcony, furniture's inbuilt wardrobe etc.) provided in the floor plans may vary as the same have been taken from concept designs prior the actual development/construction and therefore their accuracy in relation to actual construction cannot be confirmed. Hence, we make no guarantee, warranty or representation as to the accuracy and completeness of the floor plan information as changes may be made during the development process, without notice. Always refer to latest IFC design available in the sales office for the most accurate representation of all construction details.

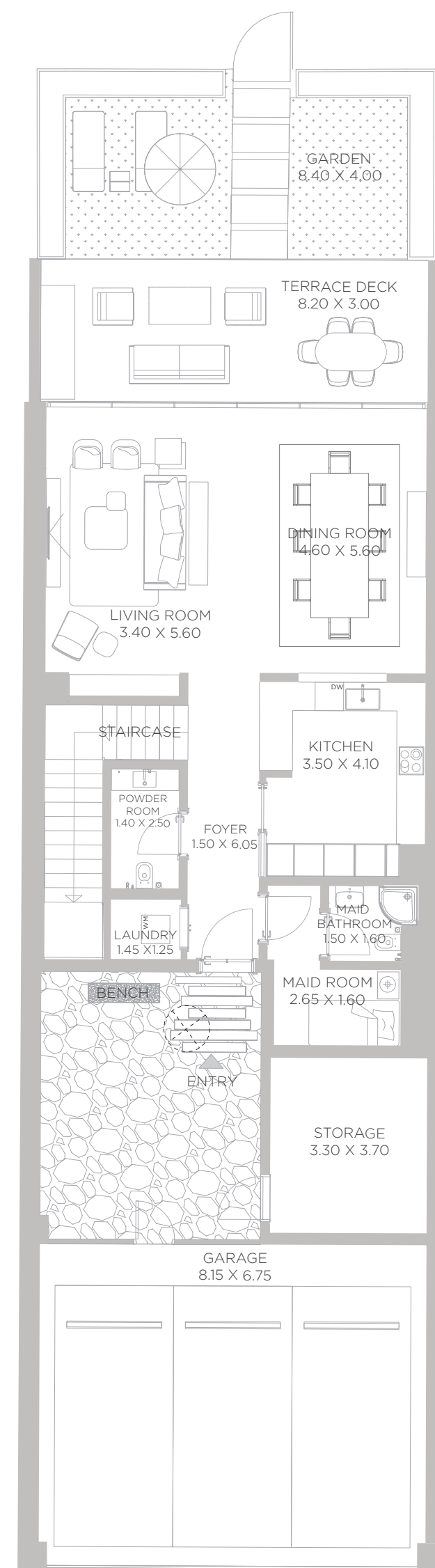
BEACH HOUSES

2 BEDROOM
 LEVEL G UNIT 04

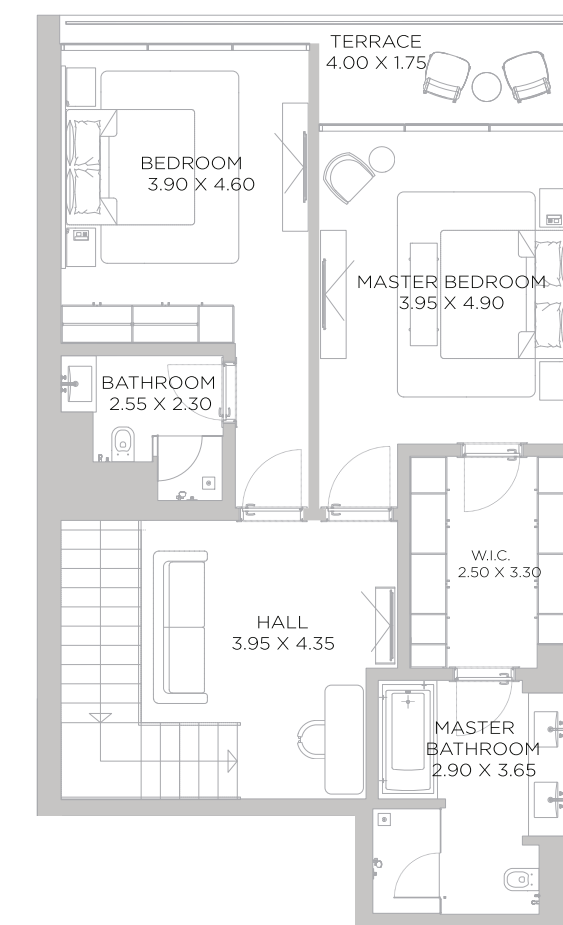
SUITE AREA	3284	SQ.FT	305.08	SQ.M.
BALCONY AREA	731	SQ.FT	67.89	SQ.M.
TOTAL AREA	4015	SQ.FT	372.97	SQ.M.



GROUND FLOOR PLAN



GROUND FLOOR



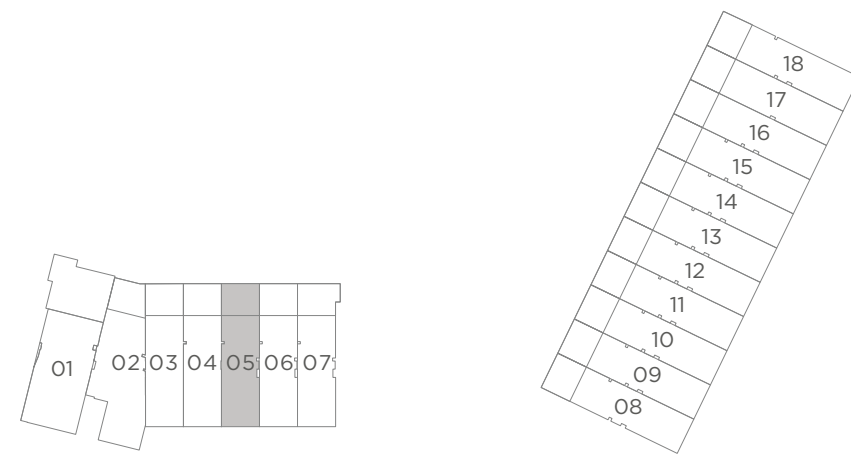
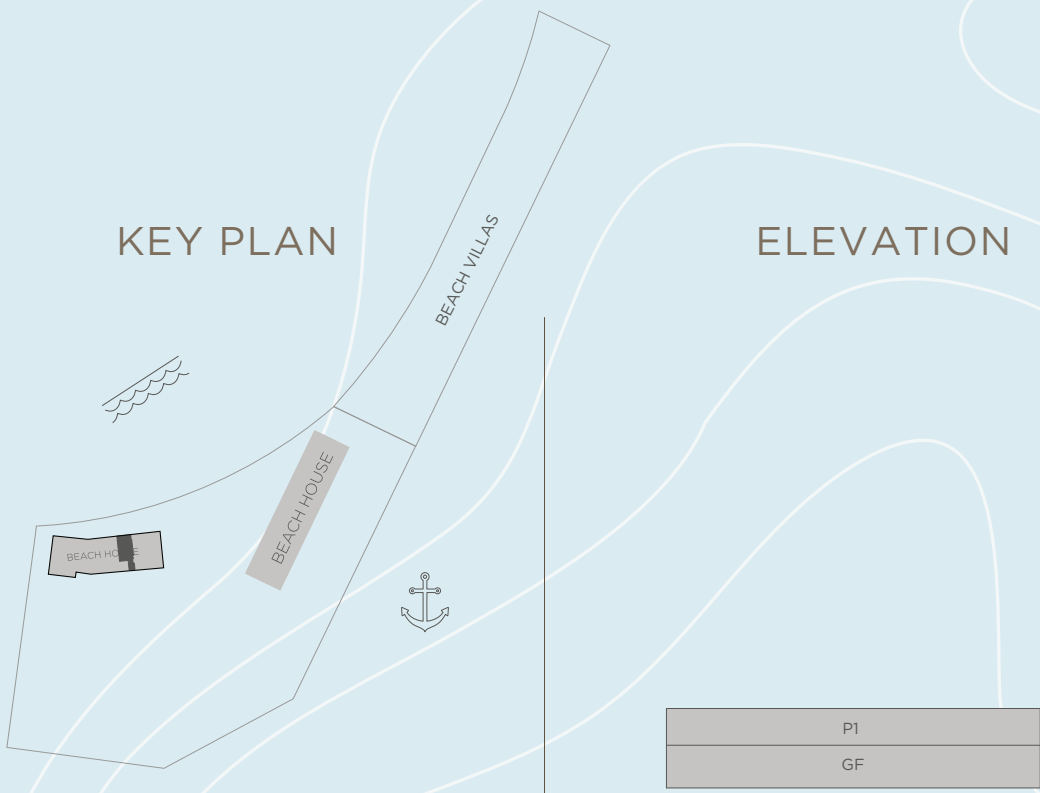
PODIUM 1

DISCLAIMER: All measurements, dimensions, coordinates and drawings, given as the Floor Plans in the literature are approximate and provided only for the purpose of marketing, illustration, information and general guidance as such drawings are not to scale. All the rooms, sizes, locations, orientations, dimensions, fixtures, fittings, finishes and specifications (including materials for, placement, size of rooms, windows, doors, balcony, furniture's inbuilt wardrobe etc.) provided in the floor plans may vary as the same have been taken from concept designs prior the actual development/construction and therefore their accuracy in relation to actual construction cannot be confirmed. Hence, we make no guarantee, warranty or representation as to the accuracy and completeness of the floor plan information as changes may be made during the development process, without notice. Always refer to latest IFC design available in the sales office for the most accurate representation of all construction details.

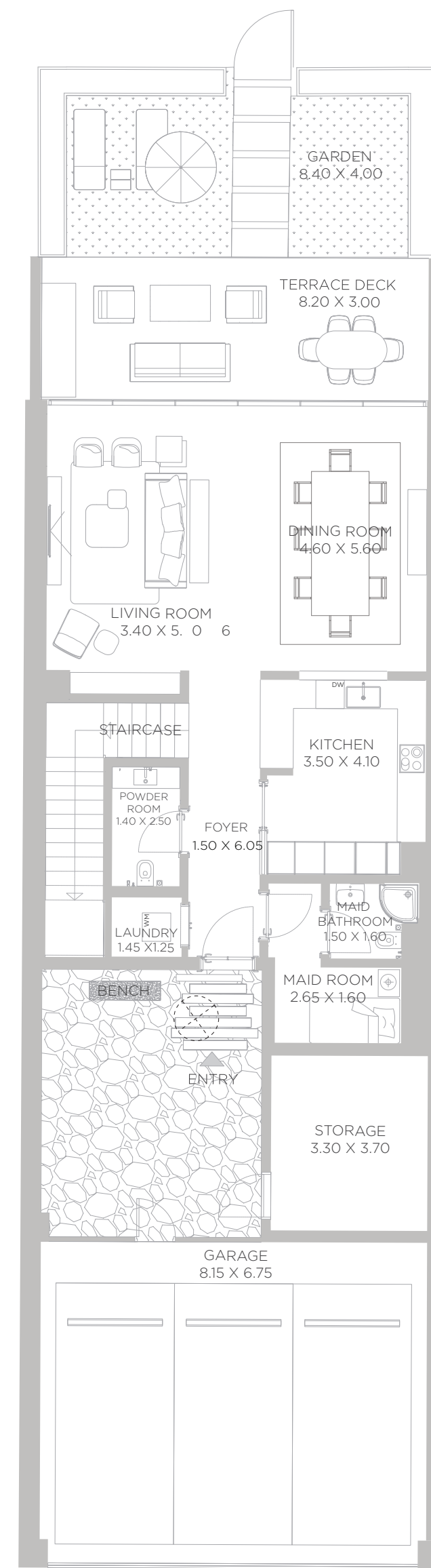
BEACH HOUSES

2 BEDROOM
 LEVEL G UNIT 05

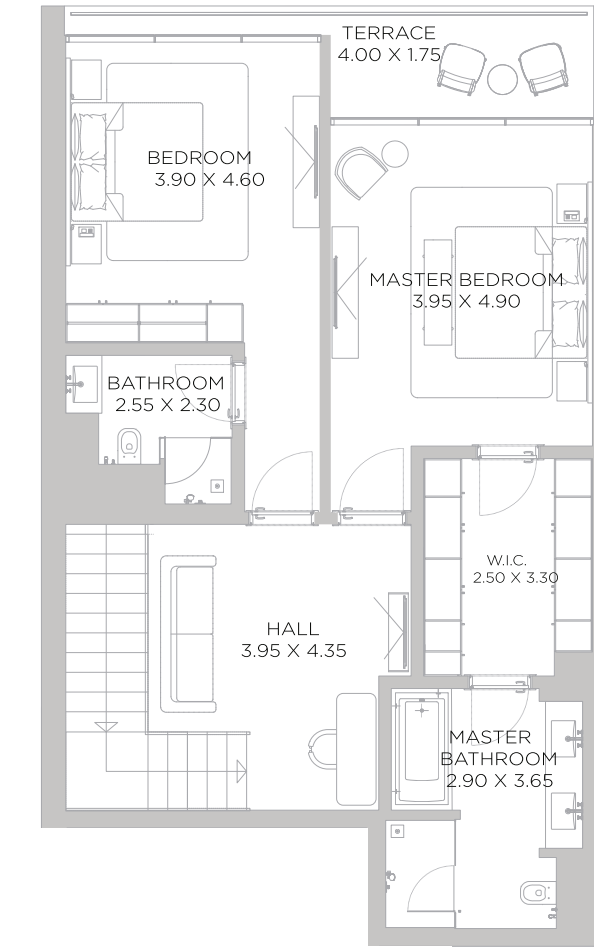
SUITE AREA	3286	SQ.FT	305.30	SQ.M.
BALCONY AREA	731	SQ.FT	67.88	SQ.M.
TOTAL AREA	4017	SQ.FT	373.18	SQ.M.



GROUND FLOOR PLAN



GROUND FLOOR



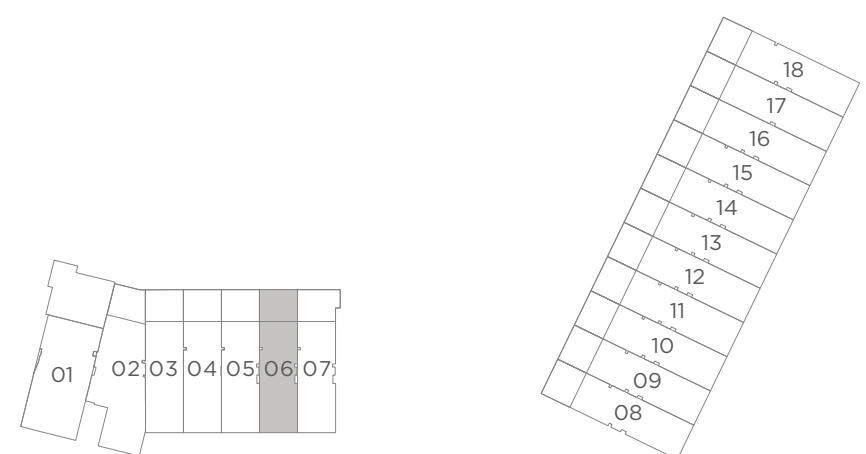
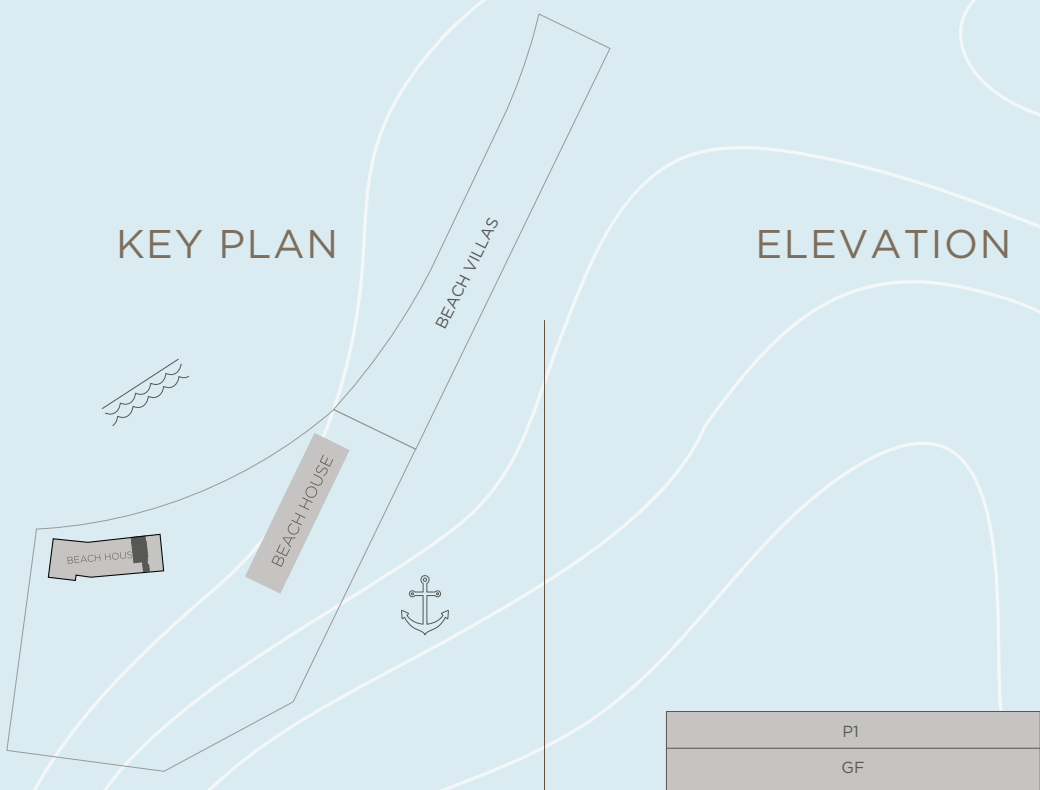
PODIUM 1

DISCLAIMER: All measurements, dimensions, coordinates and drawings, given as the Floor Plans in the literature are approximate and provided only for the purpose of marketing, illustration, information and general guidance as such drawings are not to scale. All the rooms, sizes, locations, orientations, dimensions, fixtures, fittings, finishes and specifications (including materials for, placement, size of rooms, windows, doors, balcony, furniture's inbuilt wardrobe etc.) provided in the floor plans may vary as the same have been taken from concept designs prior the actual development/construction and therefore their accuracy in relation to actual construction cannot be confirmed. Hence, we make no guarantee, warranty or representation as to the accuracy and completeness of the floor plan information as changes may be made during the development process, without notice. Always refer to latest IFC design available in the sales office for the most accurate representation of all construction details.

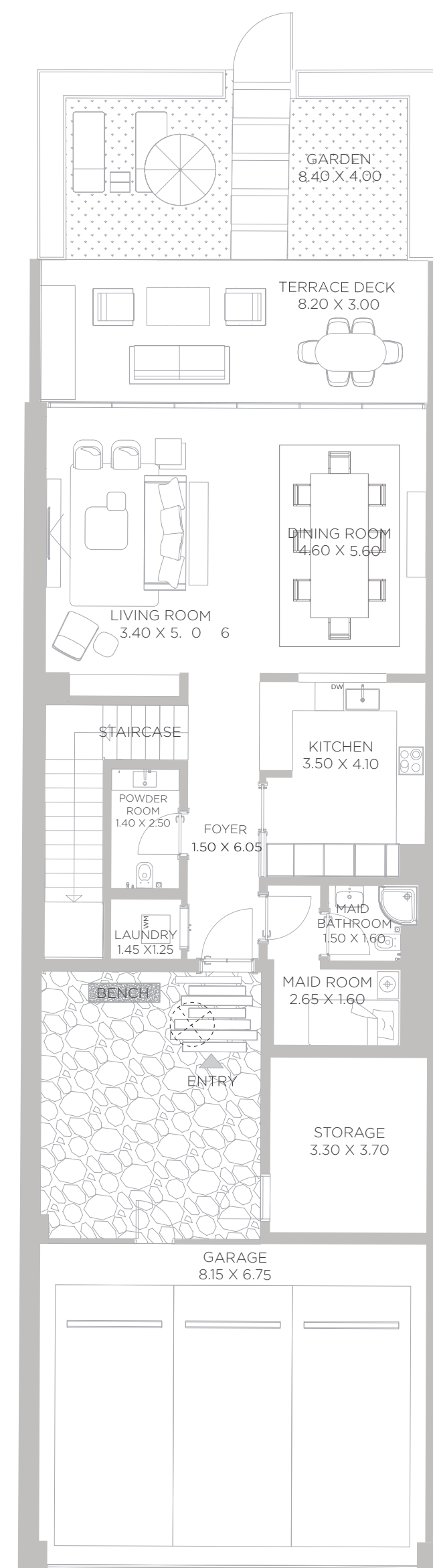
BEACH HOUSES

2 BEDROOM
LEVEL G UNIT 06

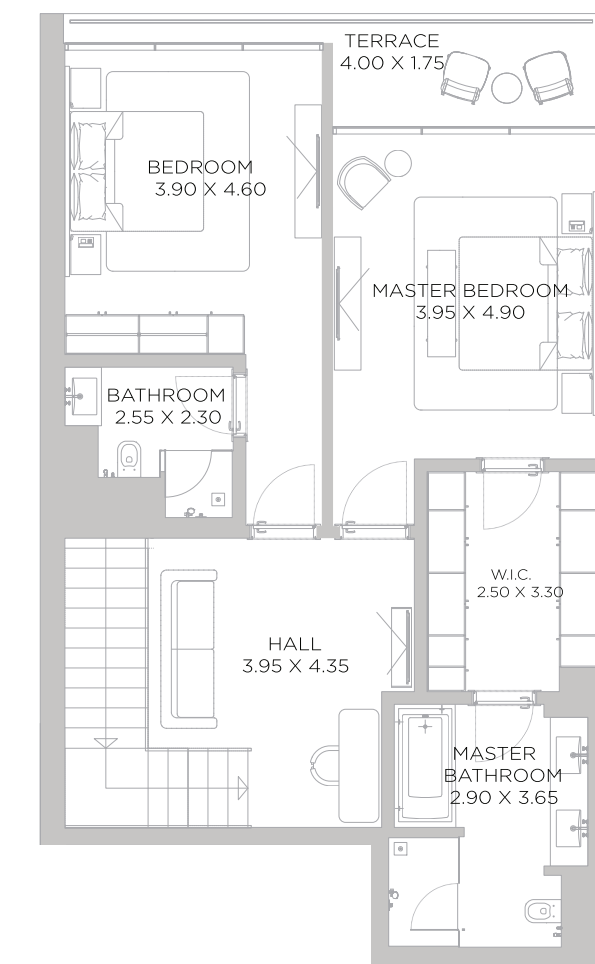
SUITE AREA	3287	SQ.FT	305.37	SQ.M.
BALCONY AREA	731	SQ.FT	67.90	SQ.M.
TOTAL AREA	4018	SQ.FT	373.27	SQ.M.



GROUND FLOOR PLAN



GROUND FLOOR



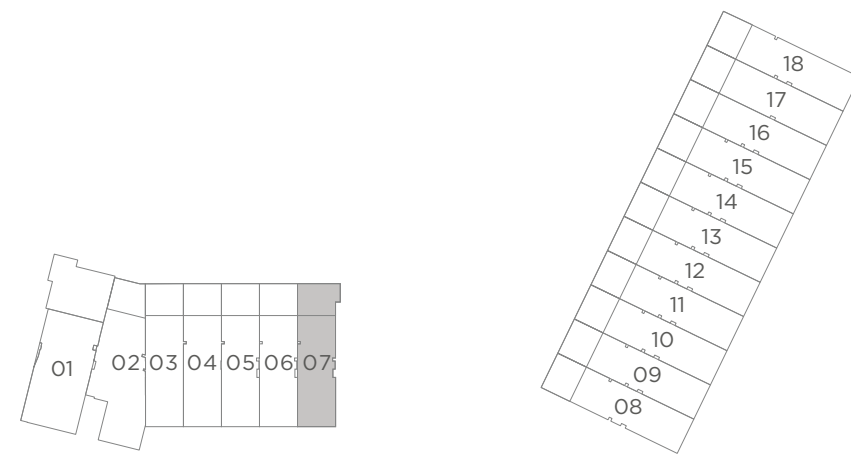
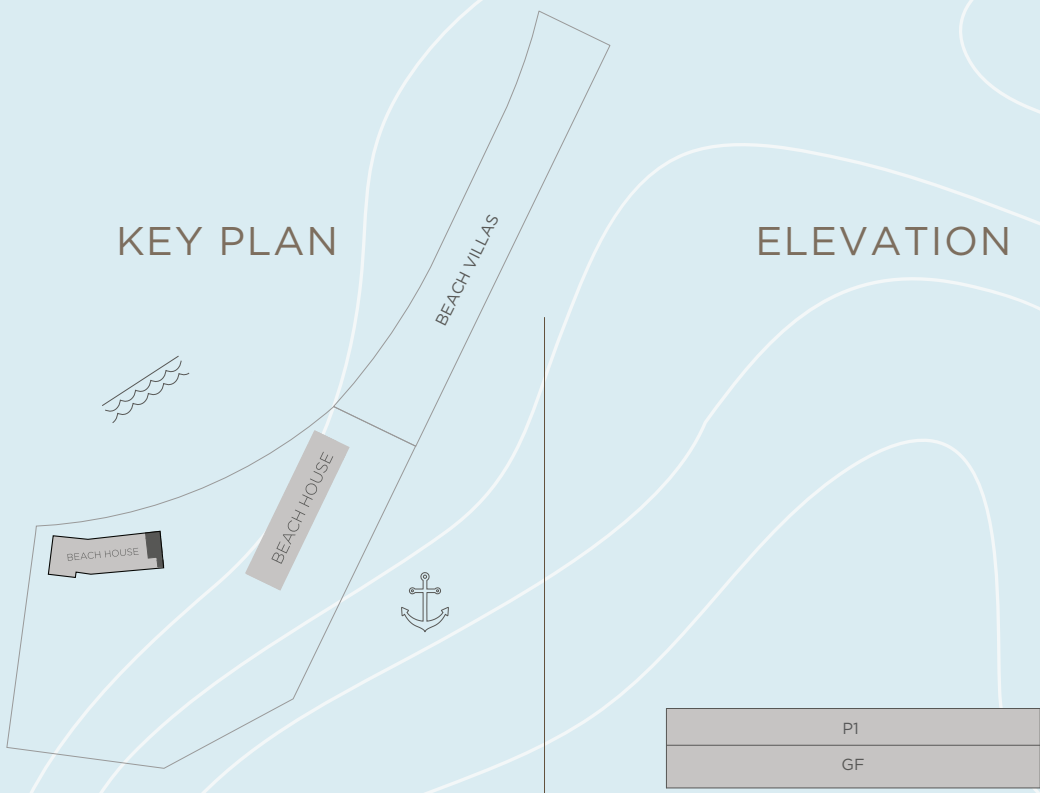
PODIUM 1

DISCLAIMER: All measurements, dimensions, coordinates and drawings, given as the Floor Plans in the literature are approximate and provided only for the purpose of marketing, illustration, information and general guidance as such drawings are not to scale. All the rooms, sizes, locations, orientations, dimensions, fixtures, fittings, finishes and specifications (including materials for, placement, size of rooms, windows, doors, balcony, furniture's inbuilt wardrobe etc.) provided in the floor plans may vary as the same have been taken from concept designs prior the actual development/construction and therefore their accuracy in relation to actual construction cannot be confirmed. Hence, we make no guarantee, warranty or representation as to the accuracy and completeness of the floor plan information as changes may be made during the development process, without notice. Always refer to latest IFC design available in the sales office for the most accurate representation of all construction details.

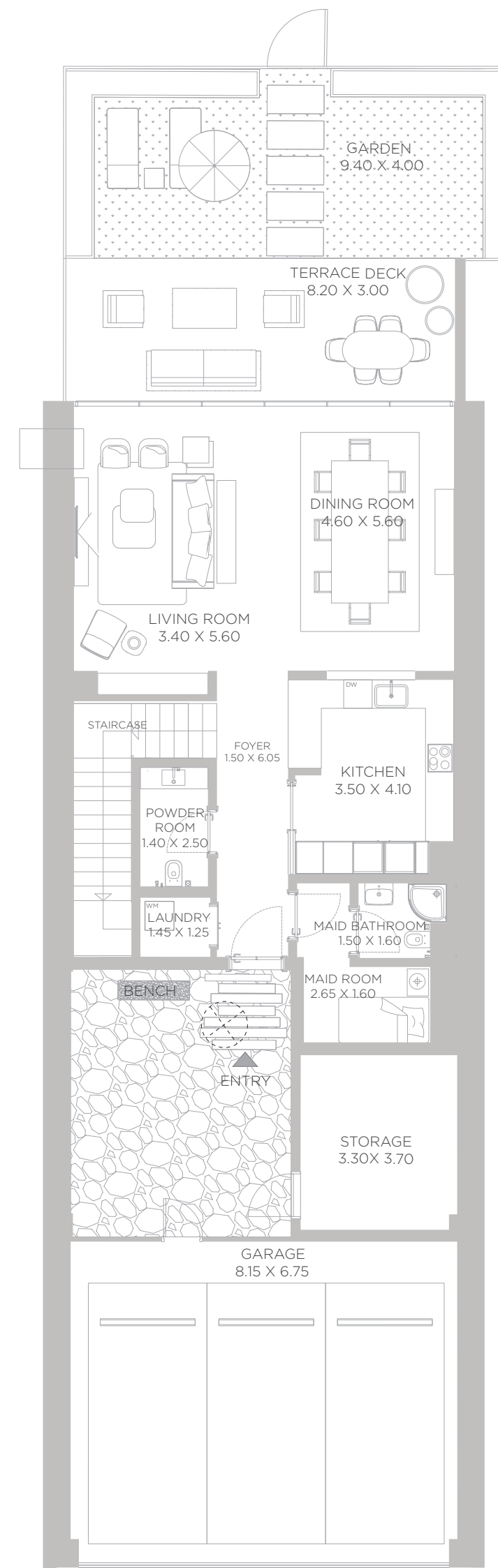
BEACH HOUSES

2 BEDROOM
 LEVEL G UNIT 07

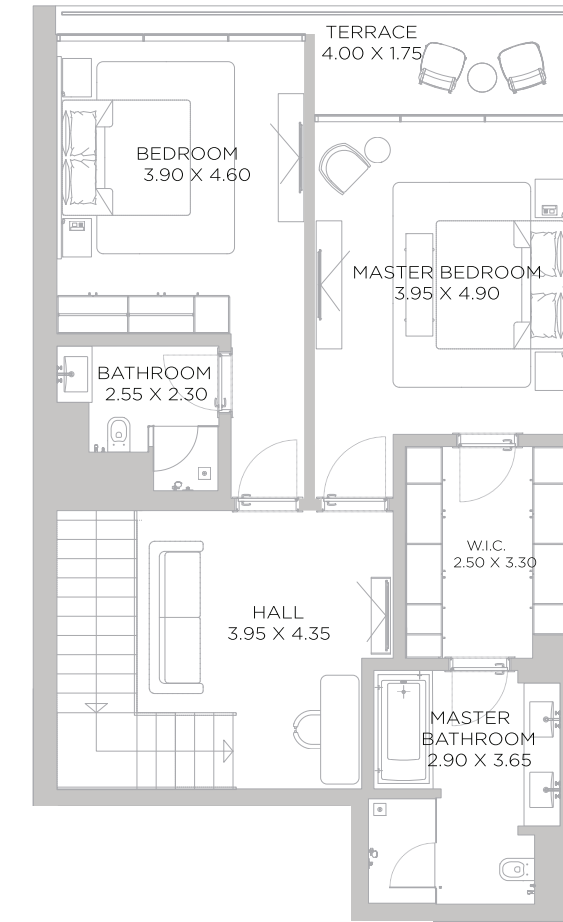
SUITE AREA	3289	SQ.FT	305.52	SQ.M.
BALCONY AREA	776	SQ.FT	72.11	SQ.M.
TOTAL AREA	4065	SQ.FT	377.63	SQ.M.



GROUND FLOOR PLAN



GROUND FLOOR



PODIUM 1

DISCLAIMER: All measurements, dimensions, coordinates and drawings, given as the Floor Plans in the literature are approximate and provided only for the purpose of marketing, illustration, information and general guidance as such drawings are not to scale. All the rooms, sizes, locations, orientations, dimensions, fixtures, fittings, finishes and specifications (including materials for, placement, size of rooms, windows, doors, balcony, furniture's inbuilt wardrobe etc.) provided in the floor plans may vary as the same have been taken from concept designs prior the actual development/construction and therefore their accuracy in relation to actual construction cannot be confirmed. Hence, we make no guarantee, warranty or representation as to the accuracy and completeness of the floor plan information as changes may be made during the development process, without notice. Always refer to latest IFC design available in the sales office for the most accurate representation of all construction details.

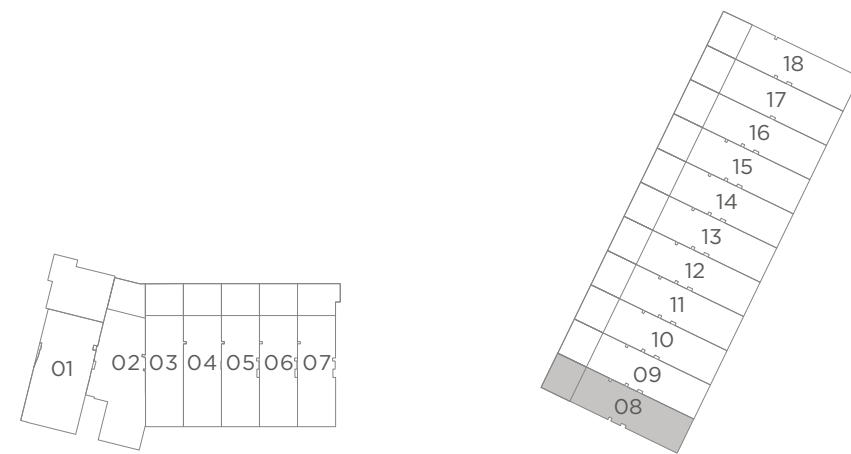
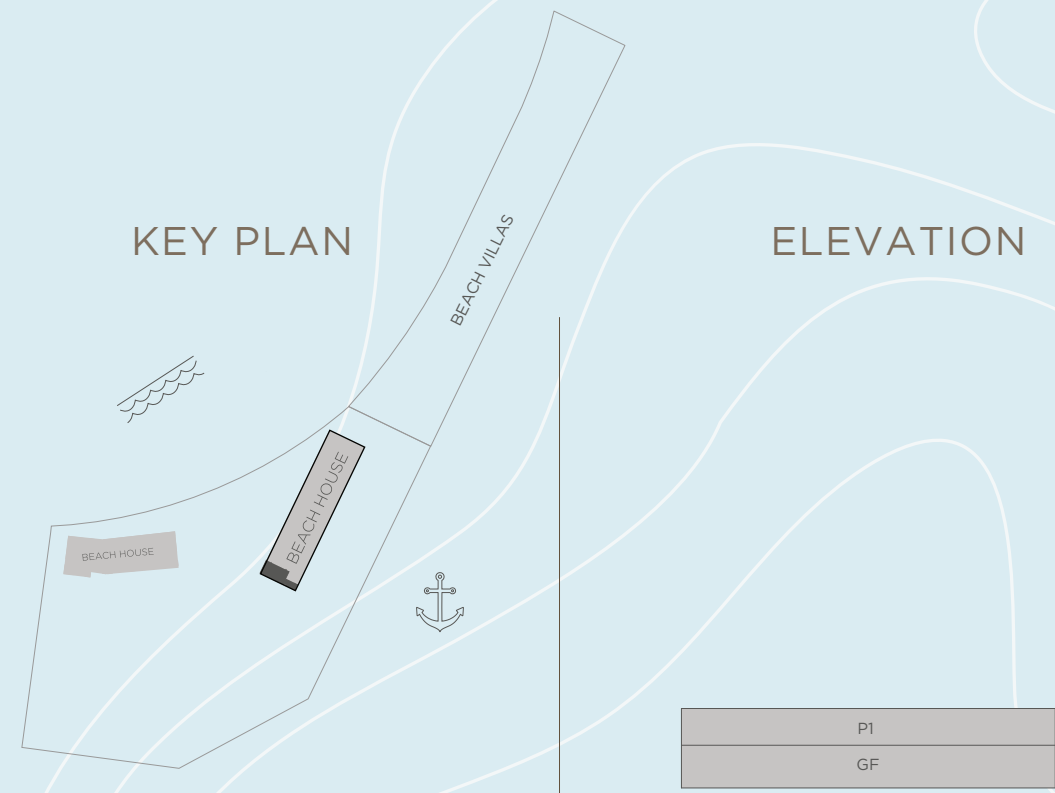
BEACH HOUSES

2 BEDROOM
 LEVEL G UNIT 08

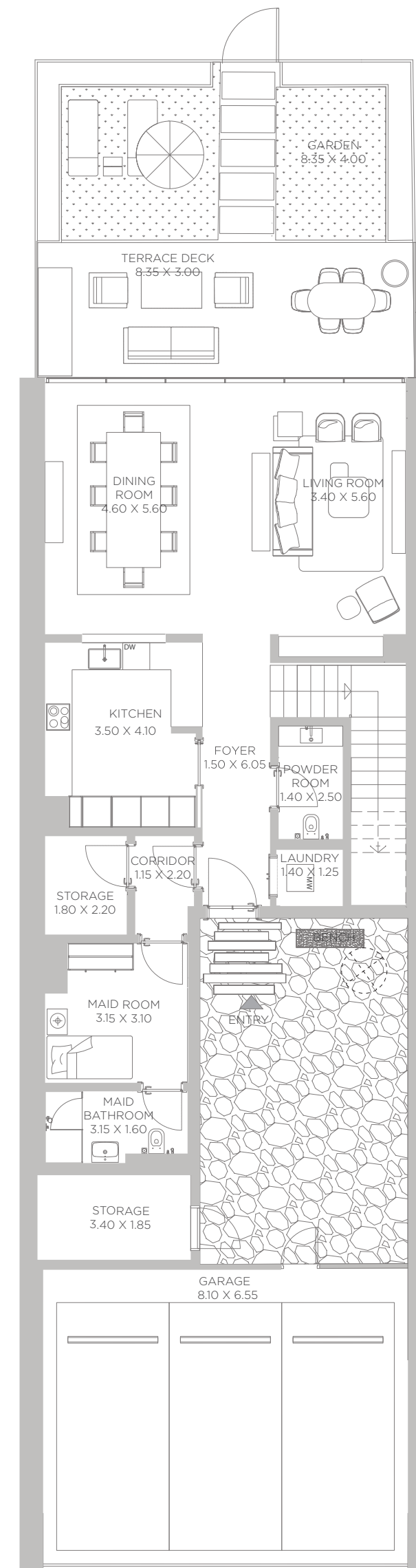
SUITE AREA	3497	SQ.FT	324.89	SQ.M.
BALCONY AREA	726	SQ.FT	67.43	SQ.M.
TOTAL AREA	4223	SQ.FT	392.32	SQ.M.

KEY PLAN

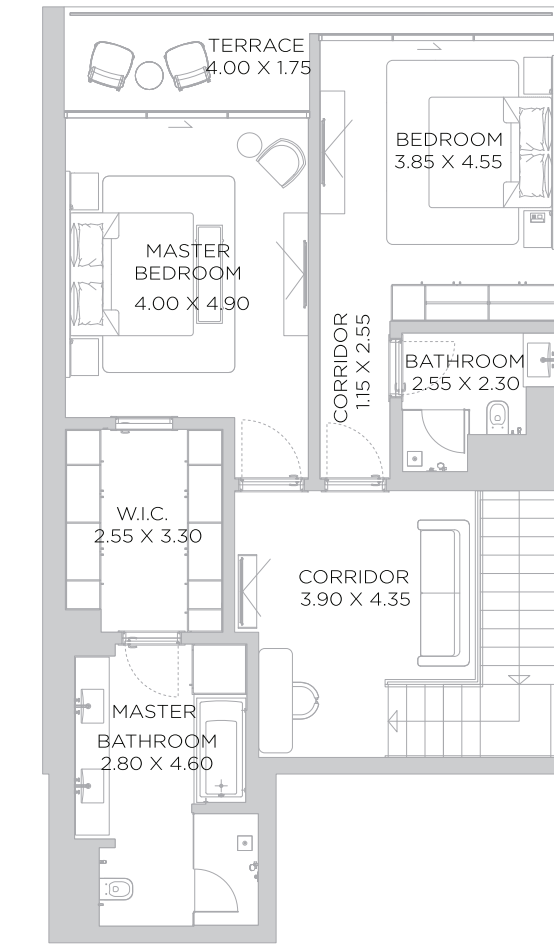
ELEVATION



GROUND FLOOR PLAN



GROUND FLOOR



PODIUM 1

DISCLAIMER: All measurements, dimensions, coordinates and drawings, given as the Floor Plans in the literature are approximate and provided only for the purpose of marketing, illustration, information and general guidance as such drawings are not to scale. All the rooms, sizes, locations, orientations, dimensions, fixtures, fittings, finishes and specifications (including materials for, placement, size of rooms, windows, doors, balcony, furniture's inbuilt wardrobe etc.) provided in the floor plans may vary as the same have been taken from concept designs prior the actual development/construction and therefore their accuracy in relation to actual construction cannot be confirmed. Hence, we make no guarantee, warranty or representation as to the accuracy and completeness of the floor plan information as changes may be made during the development process, without notice. Always refer to latest IFC design available in the sales office for the most accurate representation of all construction details.

BEACH HOUSES

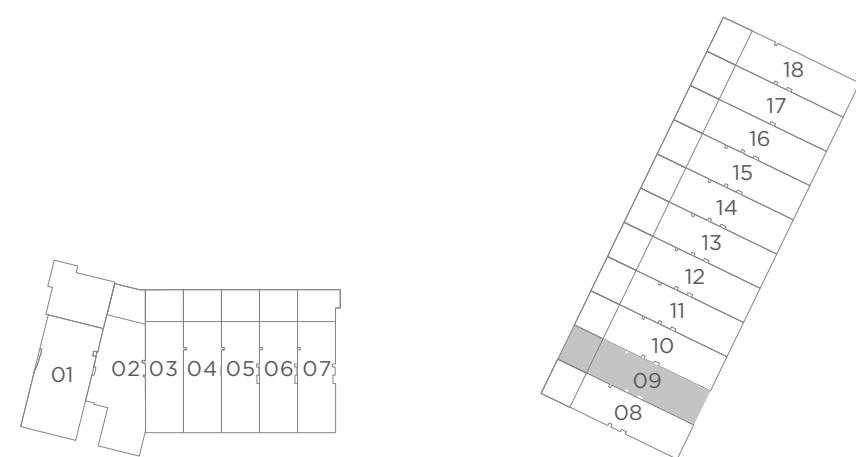
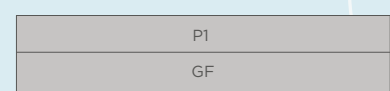
2 BEDROOM
 LEVEL G UNIT 09

SUITE AREA	3496	SQ.FT	324.76	SQ.M.
BALCONY AREA	724	SQ.FT	67.25	SQ.M.
TOTAL AREA	4220	SQ.FT	392.01	SQ.M.

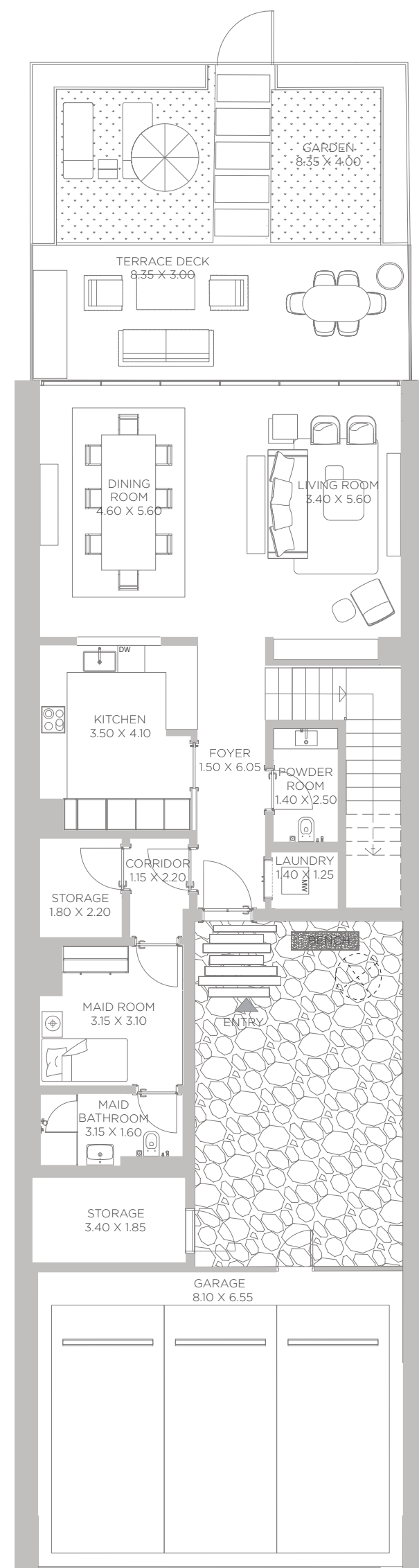
KEY PLAN



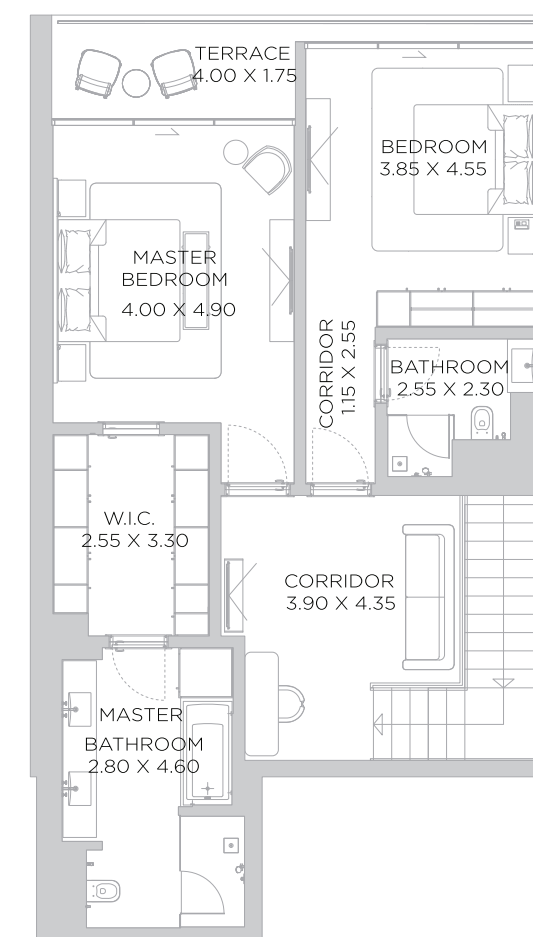
ELEVATION



GROUND FLOOR PLAN



GROUND FLOOR



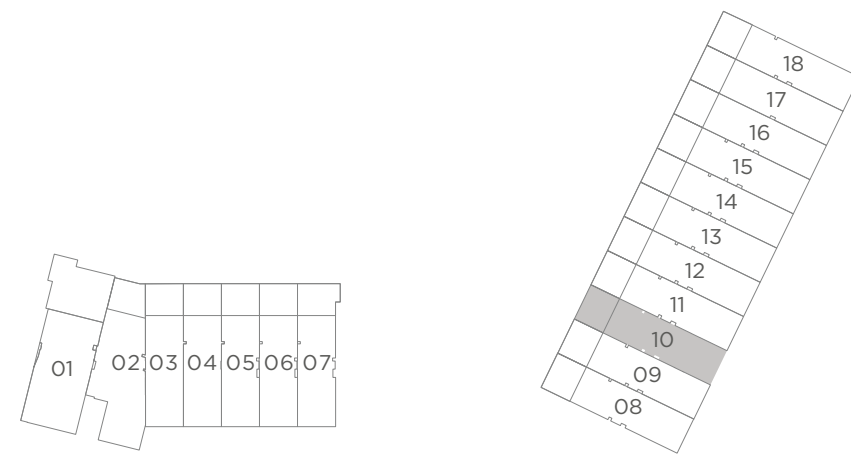
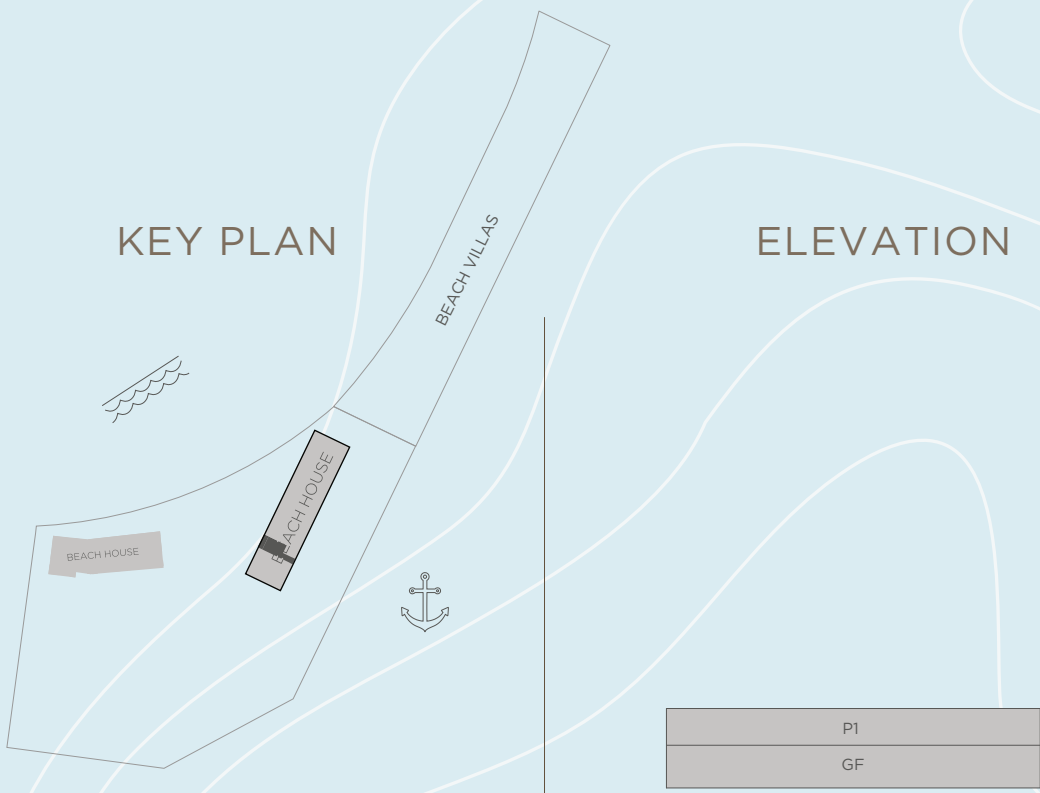
PODIUM 1

DISCLAIMER: All measurements, dimensions, coordinates and drawings, given as the Floor Plans in the literature are approximate and provided only for the purpose of marketing, illustration, information and general guidance as such drawings are not to scale. All the rooms, sizes, locations, orientations, dimensions, fixtures, fittings, finishes and specifications (including materials for, placement, size of rooms, windows, doors, balcony, furniture's inbuilt wardrobe etc.) provided in the floor plans may vary as the same have been taken from concept designs prior the actual development/construction and therefore their accuracy in relation to actual construction cannot be confirmed. Hence, we make no guarantee, warranty or representation as to the accuracy and completeness of the floor plan information as changes may be made during the development process, without notice. Always refer to latest IFC design available in the sales office for the most accurate representation of all construction details.

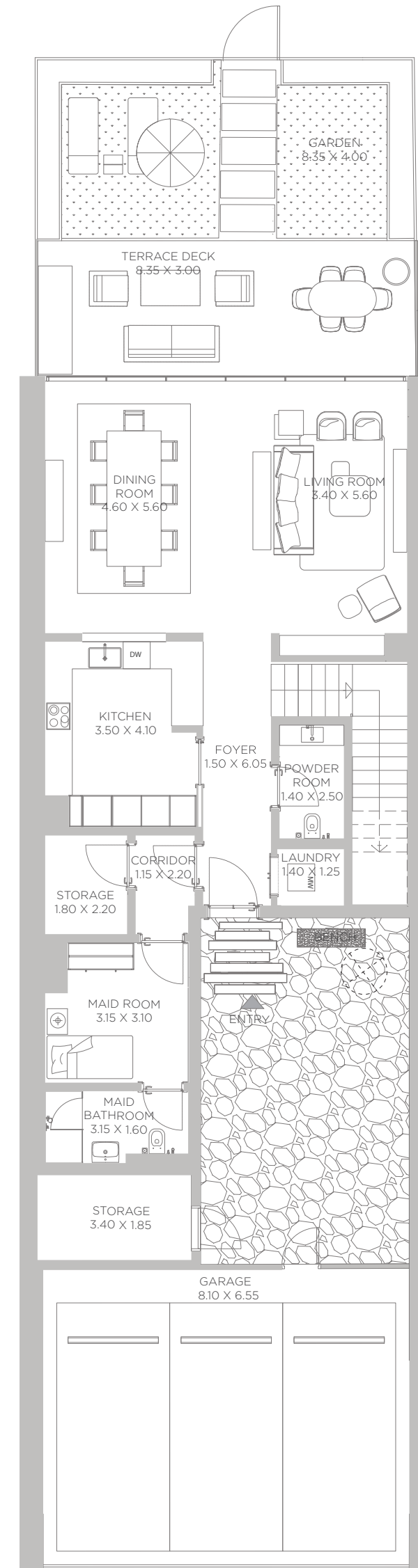
BEACH HOUSES

2 BEDROOM
 LEVEL G UNIT 10

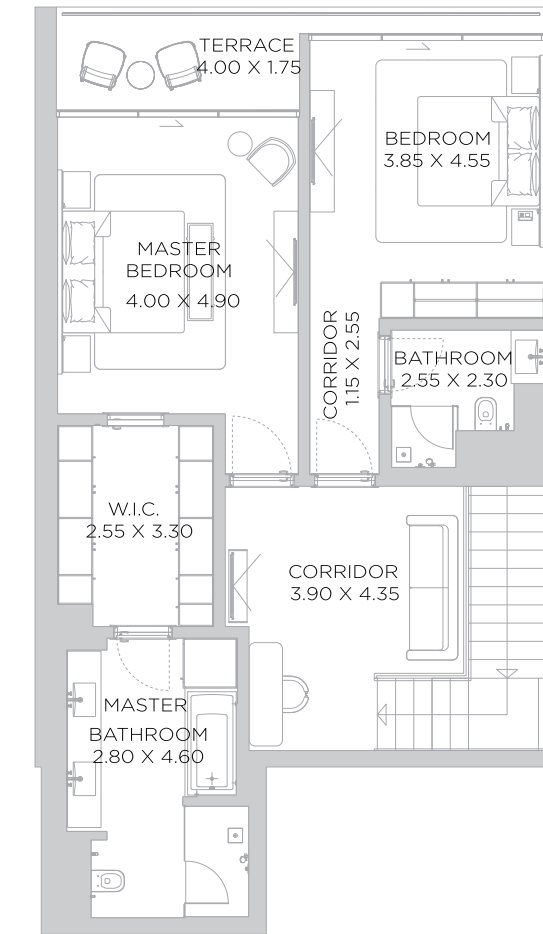
SUITE AREA	3496	SQ.FT	324.79	SQ.M.
BALCONY AREA	724	SQ.FT	67.23	SQ.M.
TOTAL AREA	4220	SQ.FT	392.02	SQ.M.



GROUND FLOOR PLAN



GROUND FLOOR



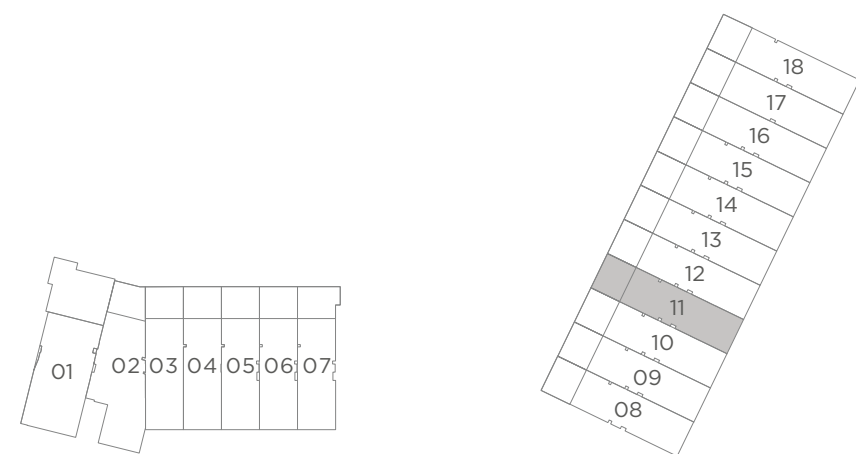
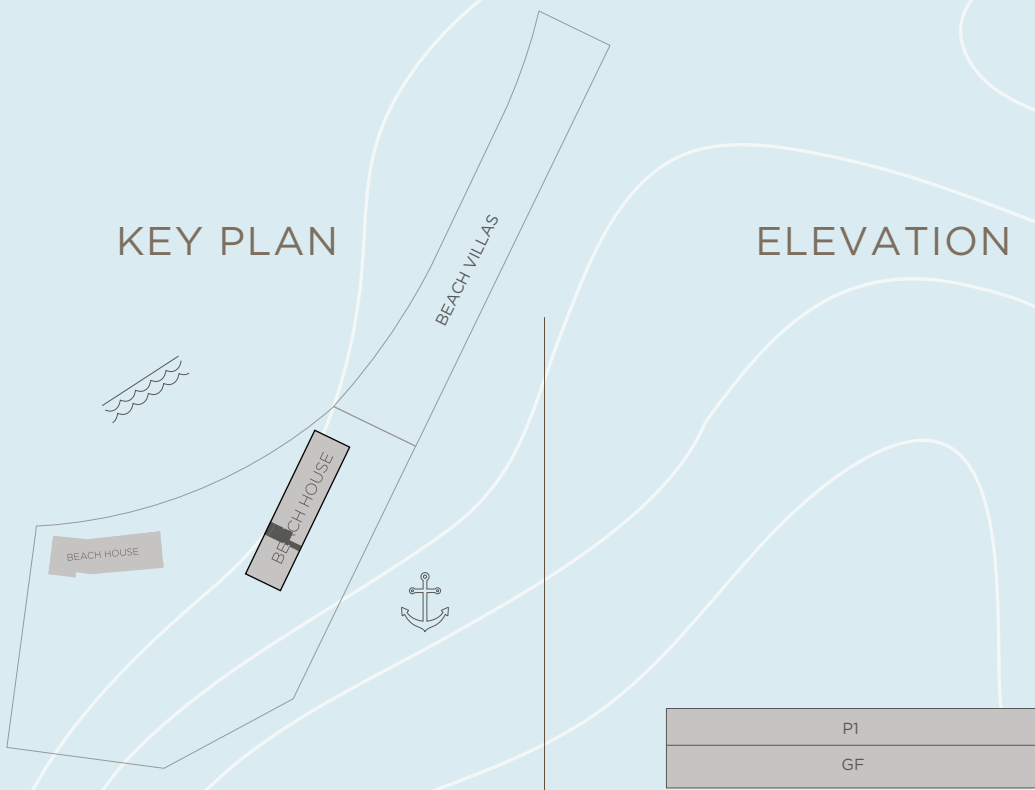
PODIUM 1

DISCLAIMER: All measurements, dimensions, coordinates and drawings, given as the Floor Plans in the literature are approximate and provided only for the purpose of marketing, illustration, information and general guidance as such drawings are not to scale. All the rooms, sizes, locations, orientations, dimensions, fixtures, fittings, finishes and specifications (including materials for, placement, size of rooms, windows, doors, balcony, furniture's inbuilt wardrobe etc.) provided in the floor plans may vary as the same have been taken from concept designs prior to the actual development/construction and therefore their accuracy in relation to actual construction cannot be confirmed. Hence, we make no guarantee, warranty or representation as to the accuracy and completeness of the floor plan information as changes may be made during the development process, without notice. Always refer to latest IFC design available in the sales office for the most accurate representation of all construction details.

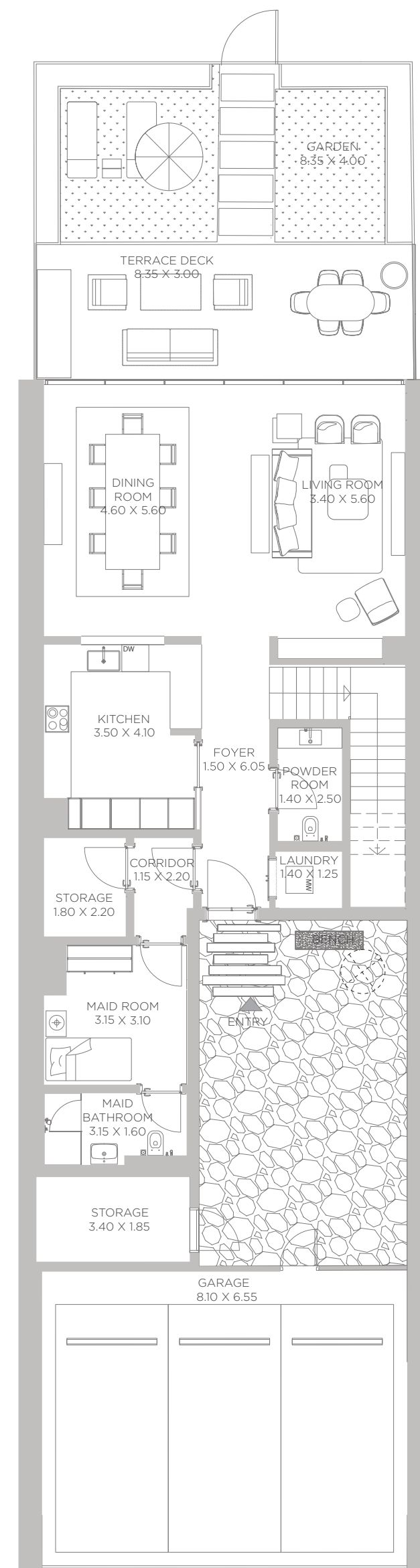
BEACH HOUSES

2 BEDROOM
 LEVEL G UNIT 11

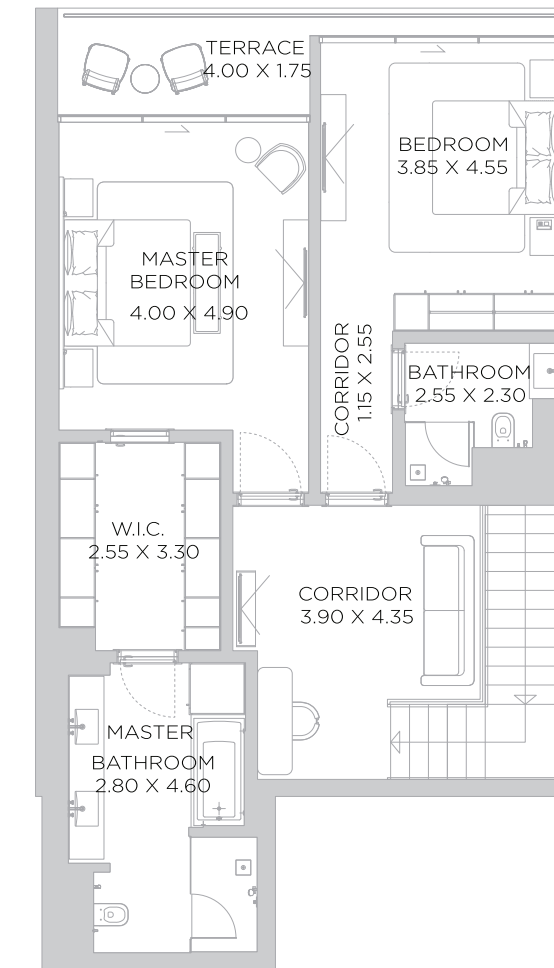
SUITE AREA	3496	SQ.FT	324.78	SQ.M.
BALCONY AREA	724	SQ.FT	67.26	SQ.M.
TOTAL AREA	4220	SQ.FT	392.04	SQ.M.



GROUND FLOOR PLAN



GROUND FLOOR



PODIUM 1

DISCLAIMER: All measurements, dimensions, coordinates and drawings, given as the Floor Plans in the literature are approximate and provided only for the purpose of marketing, illustration, information and general guidance as such drawings are not to scale. All the rooms, sizes, locations, orientations, dimensions, fixtures, fittings, finishes and specifications (including materials for, placement, size of rooms, windows, doors, balcony, furniture's inbuilt wardrobe etc.) provided in the floor plans may vary as the same have been taken from concept designs prior the actual development/construction and therefore their accuracy in relation to actual construction cannot be confirmed. Hence, we make no guarantee, warranty or representation as to the accuracy and completeness of the floor plan information as changes may be made during the development process, without notice. Always refer to latest IFC design available in the sales office for the most accurate representation of all construction details.

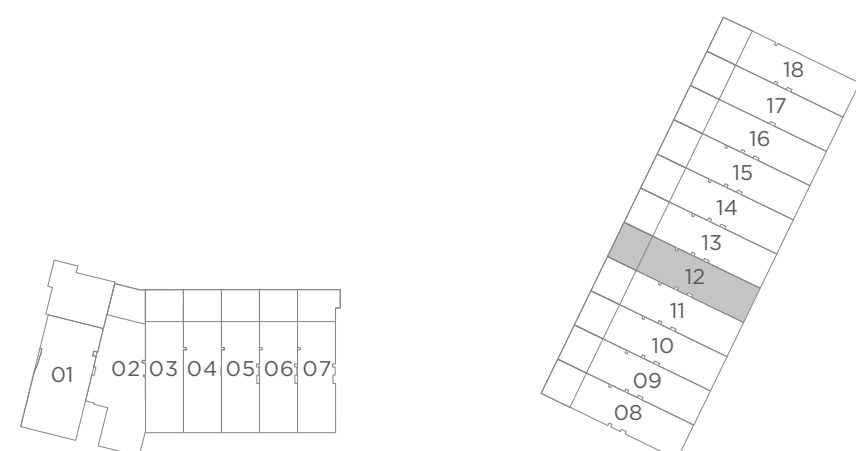
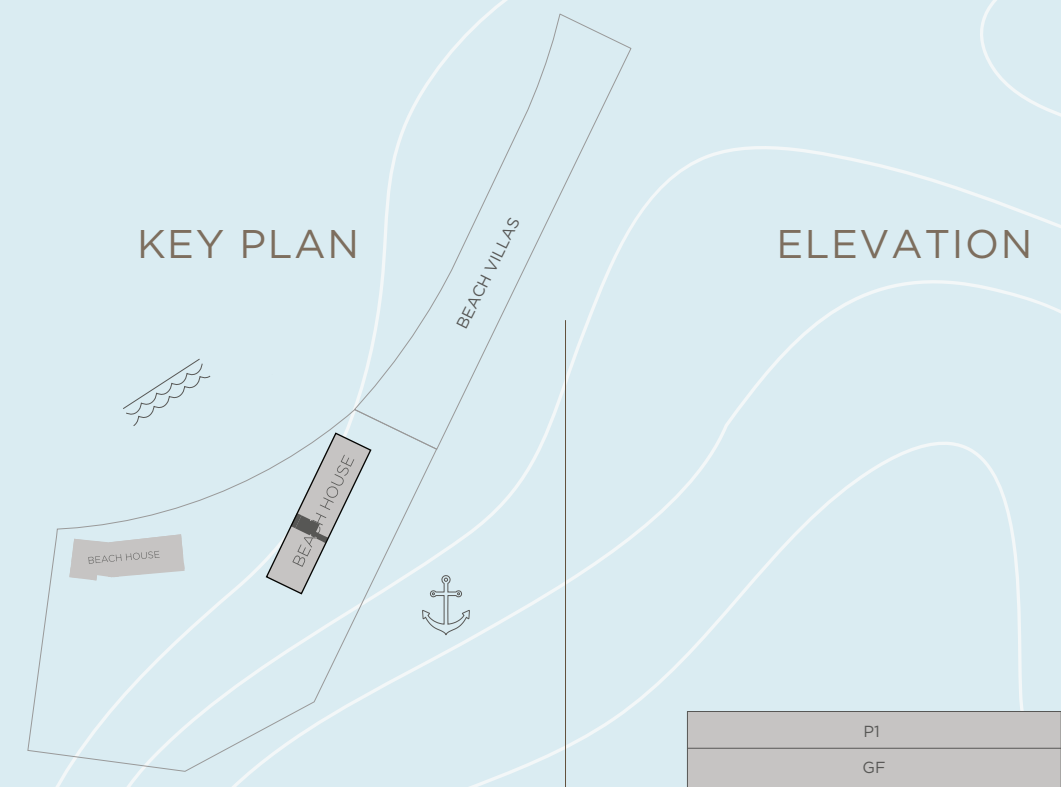
BEACH HOUSES

2 BEDROOM
LEVEL G UNIT 12

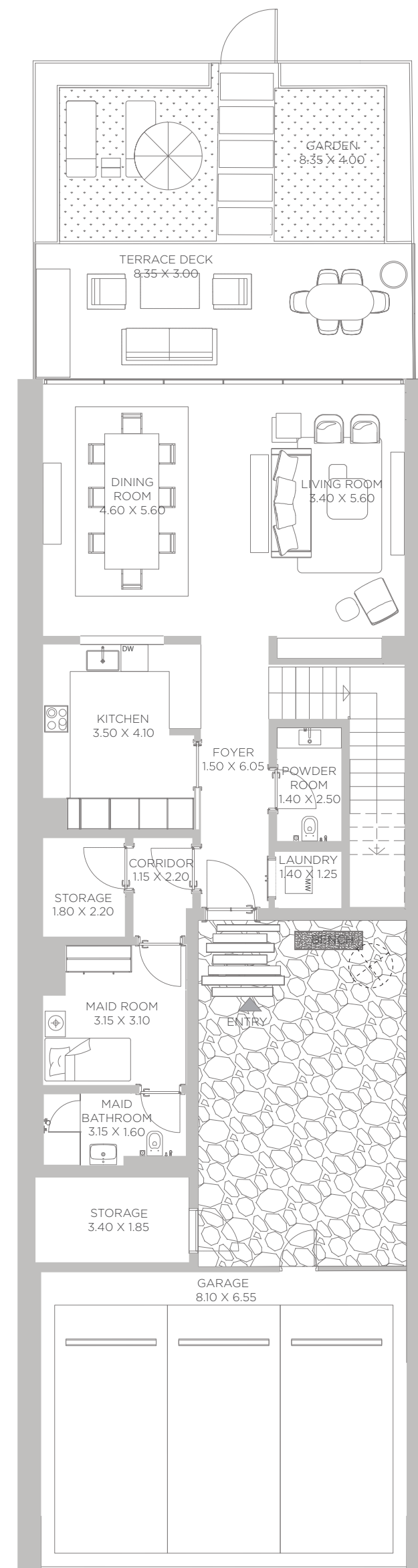
SUITE AREA	3496	SQ.FT	324.78	SQ.M.
BALCONY AREA	725	SQ.FT	67.32	SQ.M.
TOTAL AREA	4221	SQ.FT	392.10	SQ.M.

KEY PLAN

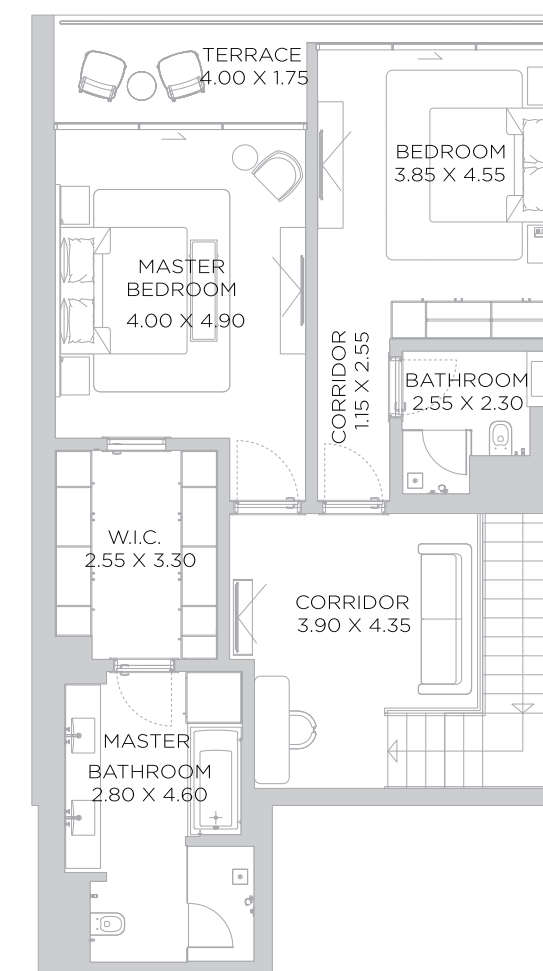
ELEVATION



GROUND FLOOR PLAN



GROUND FLOOR



PODIUM 1

DISCLAIMER: All measurements, dimensions, coordinates and drawings, given as the Floor Plans in the literature are approximate and provided only for the purpose of marketing, illustration, information and general guidance as such drawings are not to scale. All the rooms, sizes, locations, orientations, dimensions, fixtures, fittings, finishes and specifications (including materials for, placement, size of rooms, windows, doors, balcony, furniture's inbuilt wardrobe etc.) provided in the floor plans may vary as the same have been taken from concept designs prior to the actual development/construction and therefore their accuracy in relation to actual construction cannot be confirmed. Hence, we make no guarantee, warranty or representation as to the accuracy and completeness of the floor plan information as changes may be made during the development process, without notice. Always refer to latest IFC design available in the sales office for the most accurate representation of all construction details.

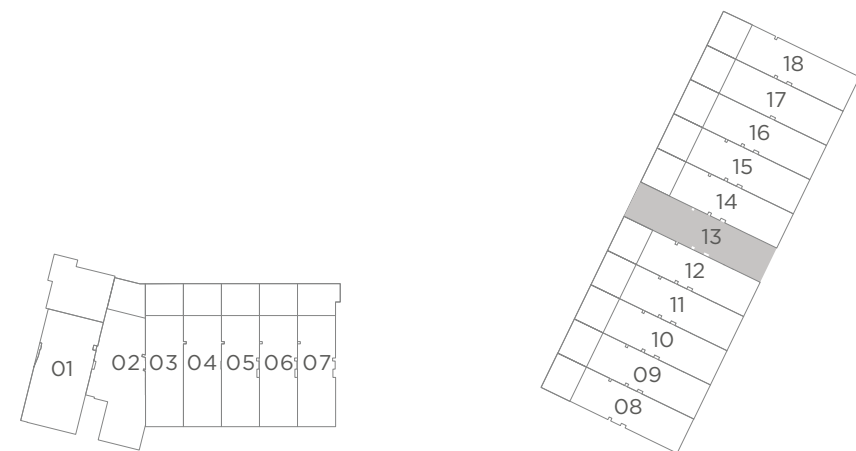
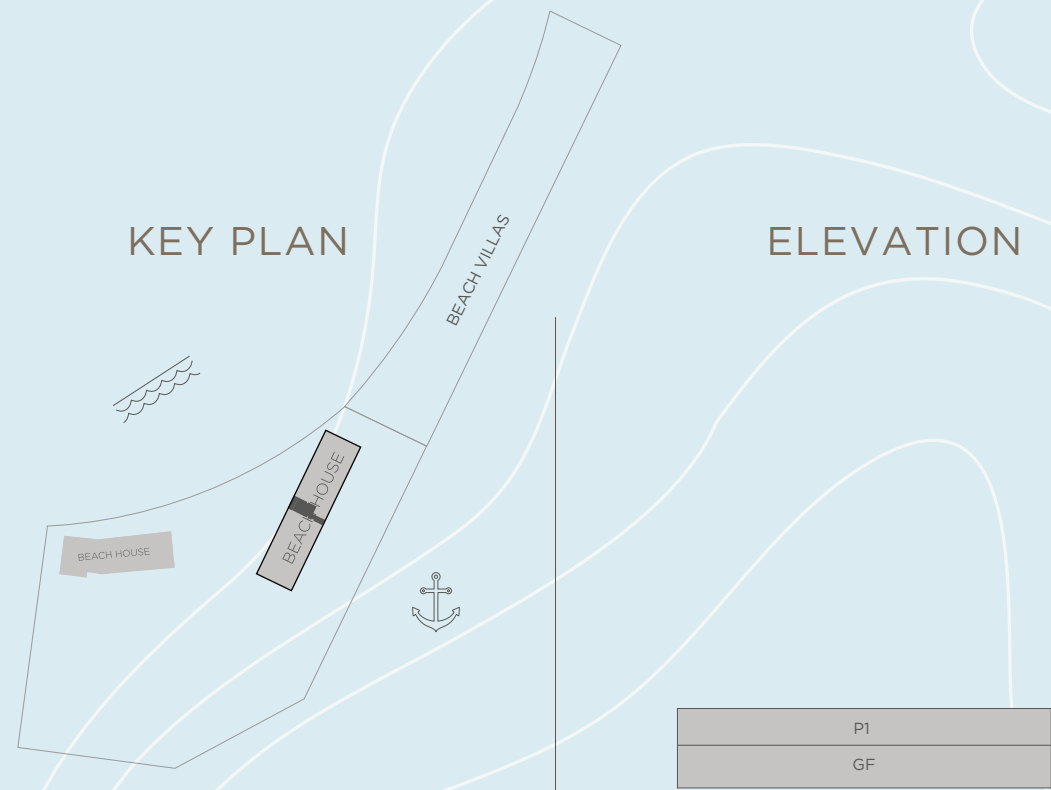
BEACH HOUSES

2 BEDROOM
 LEVEL G UNIT 13

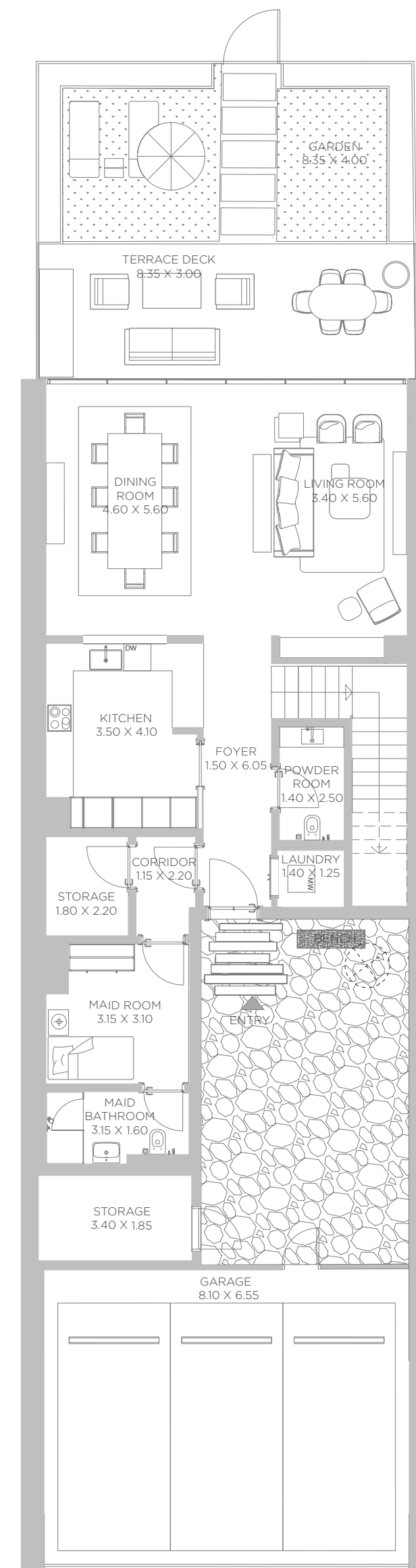
SUITE AREA	3496	SQ.FT	324.78	SQ.M.
BALCONY AREA	725	SQ.FT	67.34	SQ.M.
TOTAL AREA	4221	SQ.FT	392.12	SQ.M.

KEY PLAN

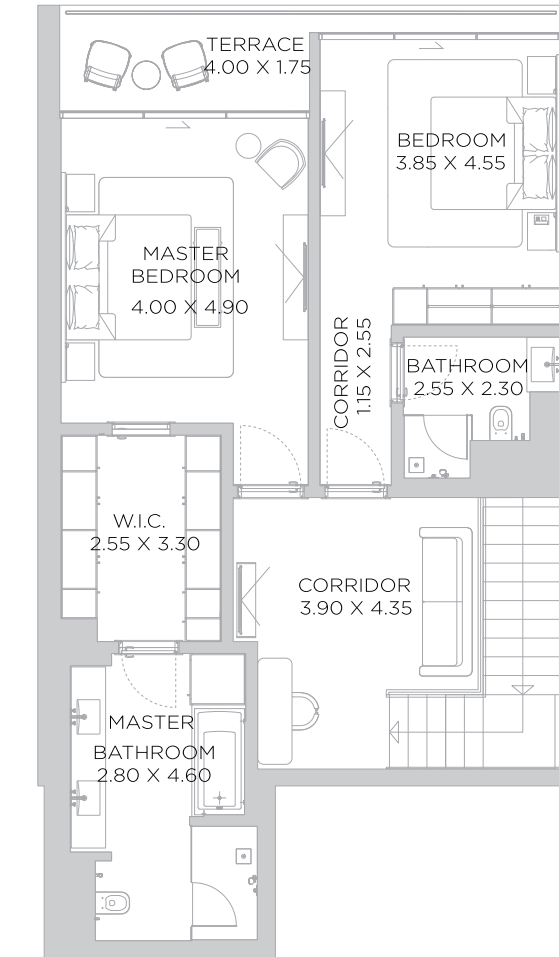
ELEVATION



GROUND FLOOR PLAN



GROUND FLOOR



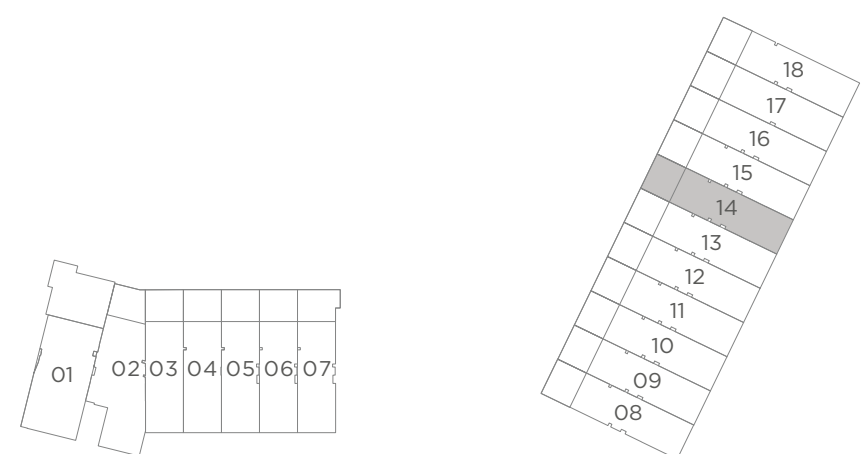
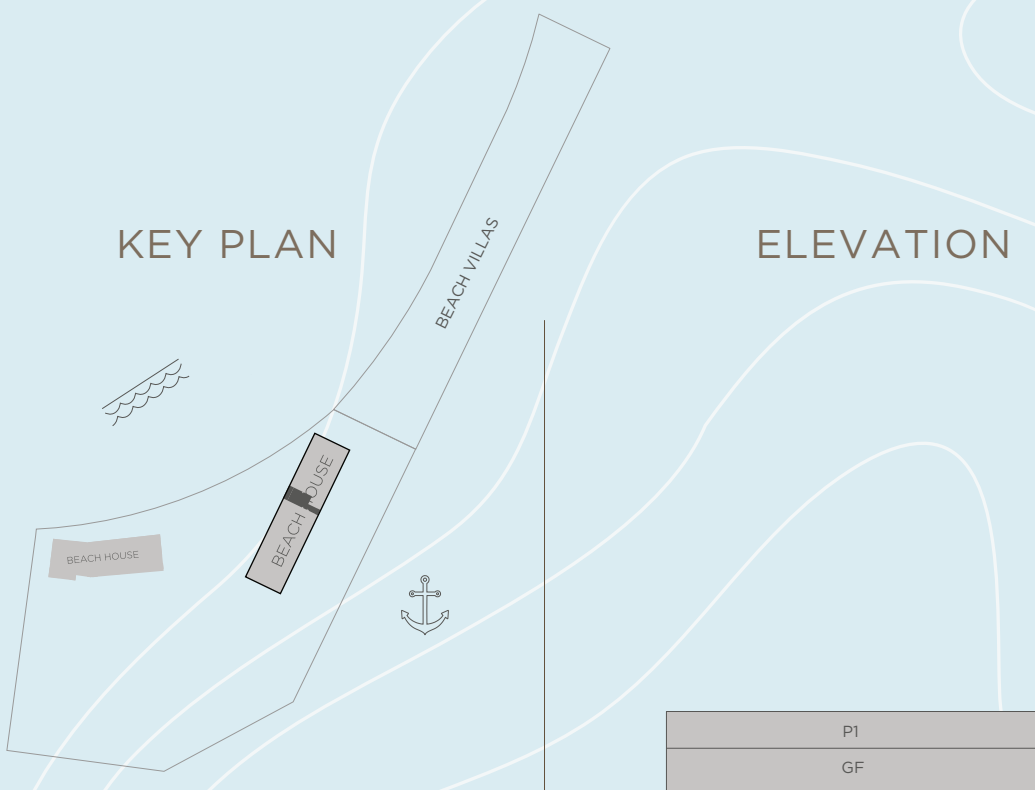
PODIUM 1

DISCLAIMER: All measurements, dimensions, coordinates and drawings, given as the Floor Plans in the literature are approximate and provided only for the purpose of marketing, illustration, information and general guidance as such drawings are not to scale. All the rooms, sizes, locations, orientations, dimensions, fixtures, fittings, finishes and specifications (including materials for, placement, size of rooms, windows, doors, balcony, furniture's inbuilt wardrobe etc.) provided in the floor plans may vary as the same have been taken from concept designs prior to the actual development/construction and therefore their accuracy in relation to actual construction cannot be confirmed. Hence, we make no guarantee, warranty or representation as to the accuracy and completeness of the floor plan information as changes may be made during the development process, without notice. Always refer to latest IFC design available in the sales office for the most accurate representation of all construction details.

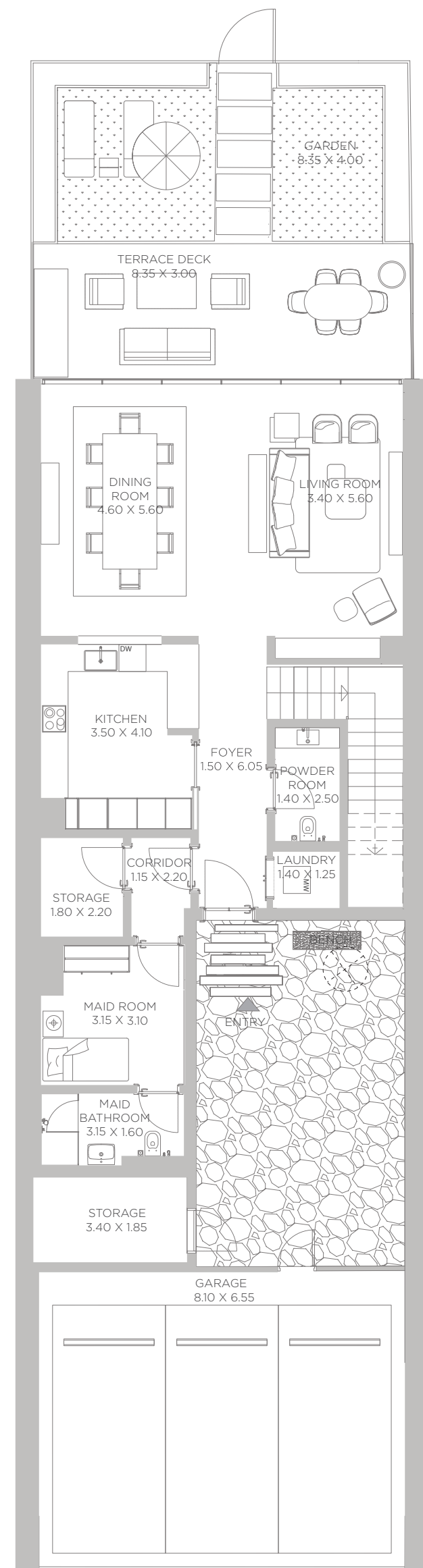
BEACH HOUSES

2 BEDROOM
LEVEL G UNIT 14

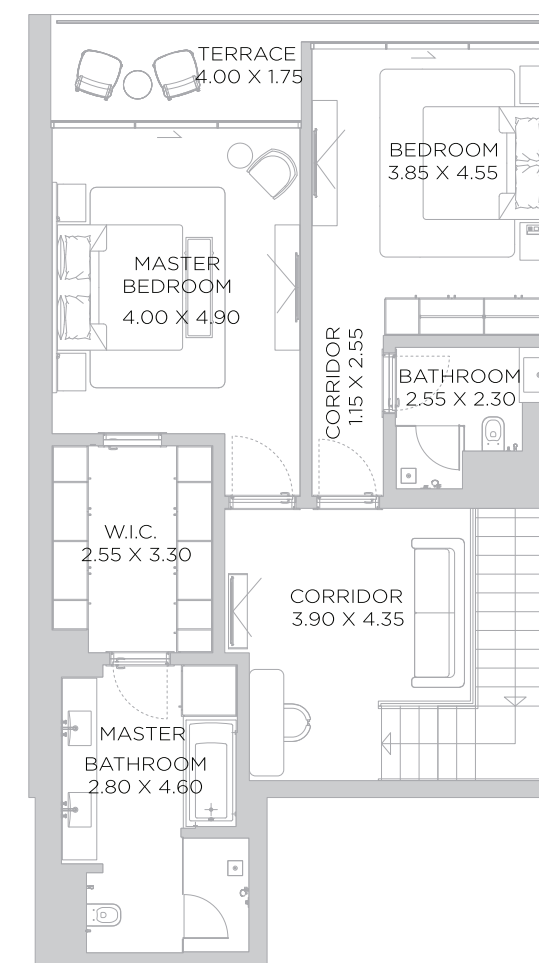
SUITE AREA	3496	SQ.FT	324.79	SQ.M.
BALCONY AREA	723	SQ.FT	67.13	SQ.M.
TOTAL AREA	4219	SQ.FT	391.92	SQ.M.



GROUND FLOOR PLAN



GROUND FLOOR



PODIUM 1

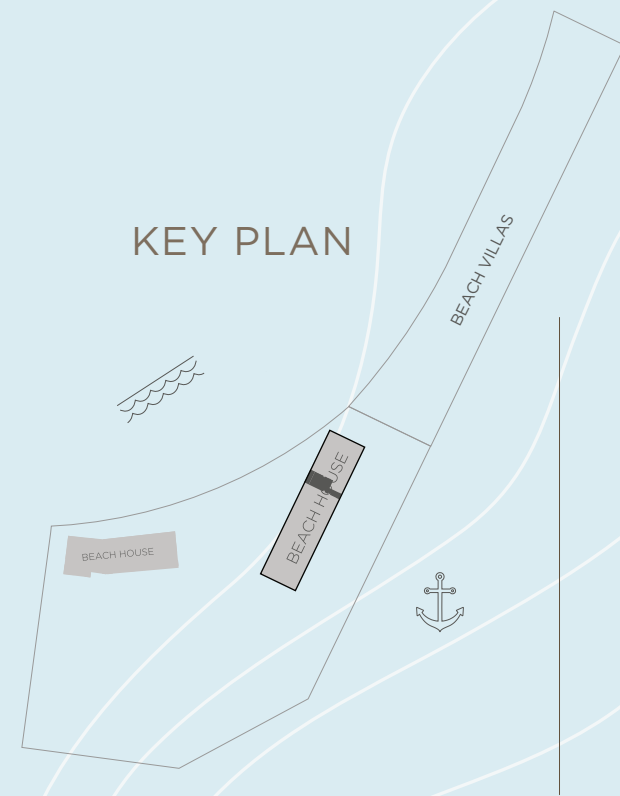
DISCLAIMER: All measurements, dimensions, coordinates and drawings, given as the Floor Plans in the literature are approximate and provided only for the purpose of marketing, illustration, information and general guidance as such drawings are not to scale. All the rooms, sizes, locations, orientations, dimensions, fixtures, fittings, finishes and specifications (including materials for, placement, size of rooms, windows, doors, balcony, furniture's inbuilt wardrobe etc.) provided in the floor plans may vary as the same have been taken from concept designs prior the actual development/construction and therefore their accuracy in relation to actual construction cannot be confirmed. Hence, we make no guarantee, warranty or representation as to the accuracy and completeness of the floor plan information as changes may be made during the development process, without notice. Always refer to latest IFC design available in the sales office for the most accurate representation of all construction details.

BEACH HOUSES

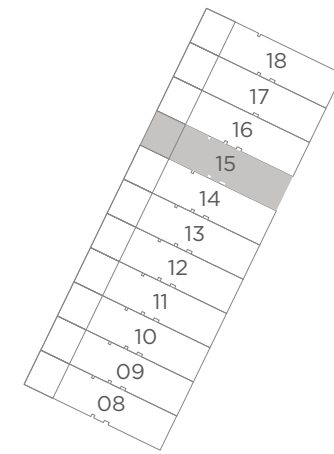
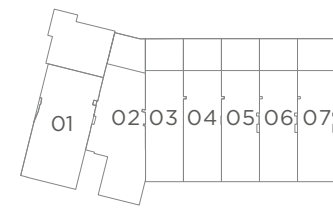
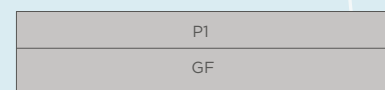
2 BEDROOM
LEVEL G UNIT 15

SUITE AREA	3496	SQ.FT	324.78	SQ.M.
BALCONY AREA	726	SQ.FT	67.50	SQ.M.
TOTAL AREA	4222	SQ.FT	392.28	SQ.M.

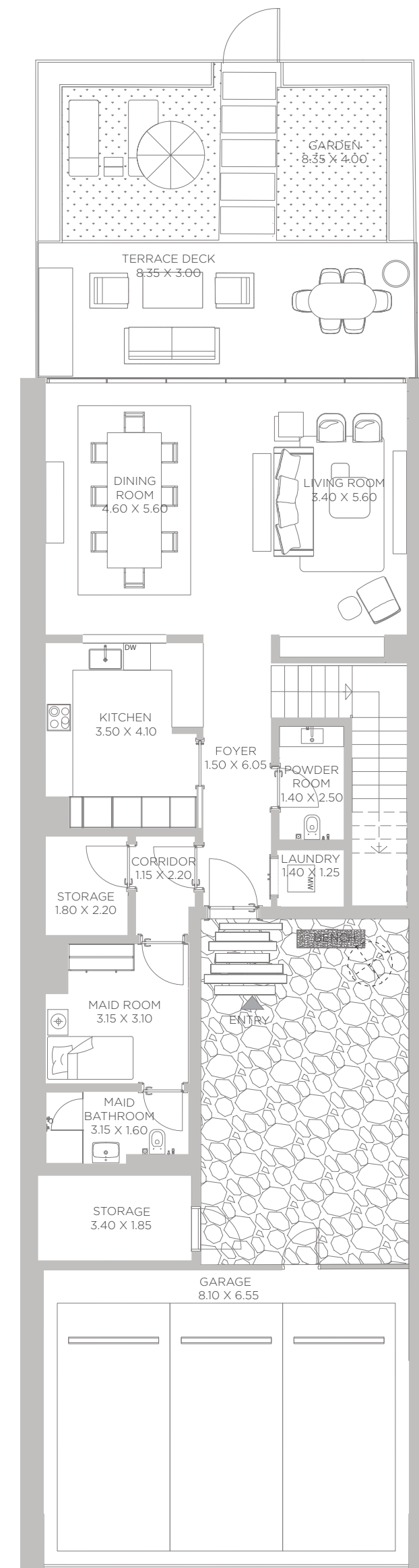
KEY PLAN



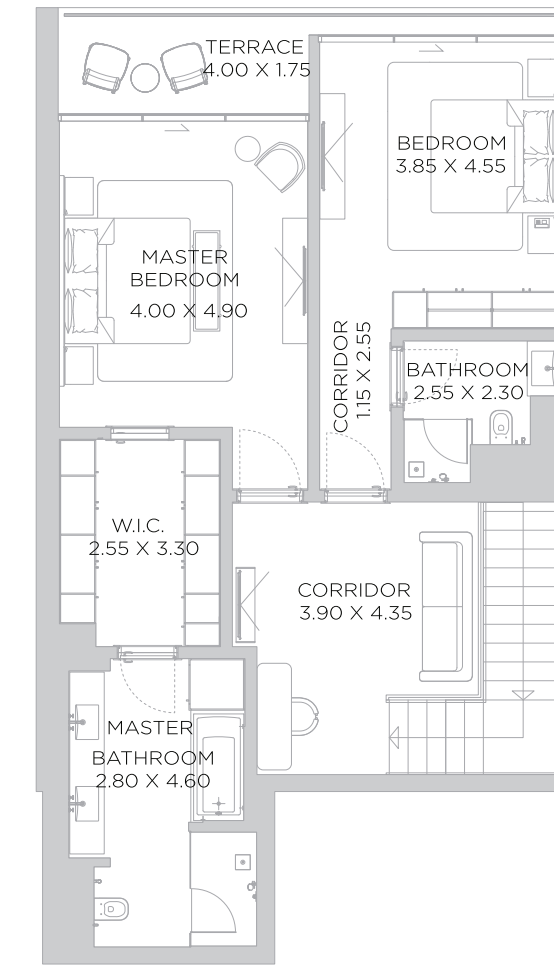
ELEVATION



GROUND FLOOR PLAN



GROUND FLOOR



PODIUM 1

DISCLAIMER: All measurements, dimensions, coordinates and drawings, given as the Floor Plans in the literature are approximate and provided only for the purpose of marketing, illustration, information and general guidance as such drawings are not to scale. All the rooms, sizes, locations, orientations, dimensions, fixtures, fittings, finishes and specifications (including materials for, placement, size of rooms, windows, doors, balcony, furniture's inbuilt wardrobe etc.) provided in the floor plans may vary as the same have been taken from concept designs prior to the actual development/construction and therefore their accuracy in relation to actual construction cannot be confirmed. Hence, we make no guarantee, warranty or representation as to the accuracy and completeness of the floor plan information as changes may be made during the development process, without notice. Always refer to latest IFC design available in the sales office for the most accurate representation of all construction details.

BEACH HOUSES

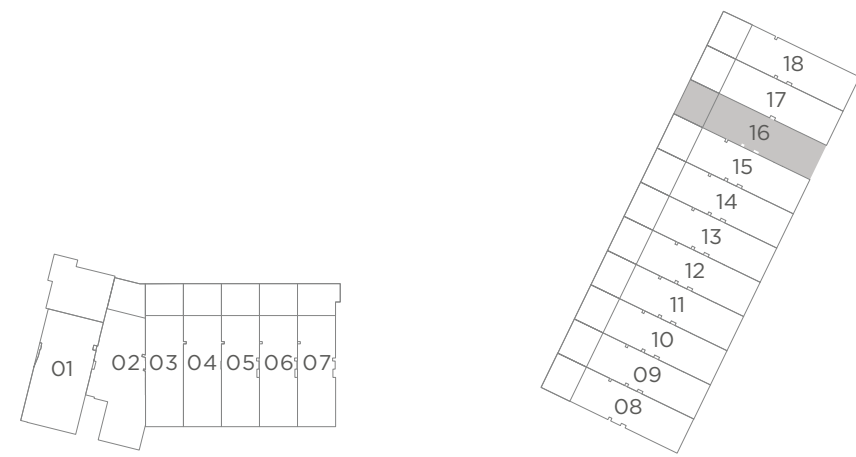
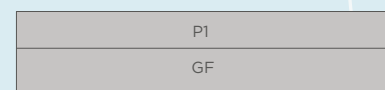
2 BEDROOM
 LEVEL G UNIT 16

SUITE AREA	3496	SQ.FT	324.79	SQ.M.
BALCONY AREA	725	SQ.FT	67.38	SQ.M.
TOTAL AREA	4221	SQ.FT	392.17	SQ.M.

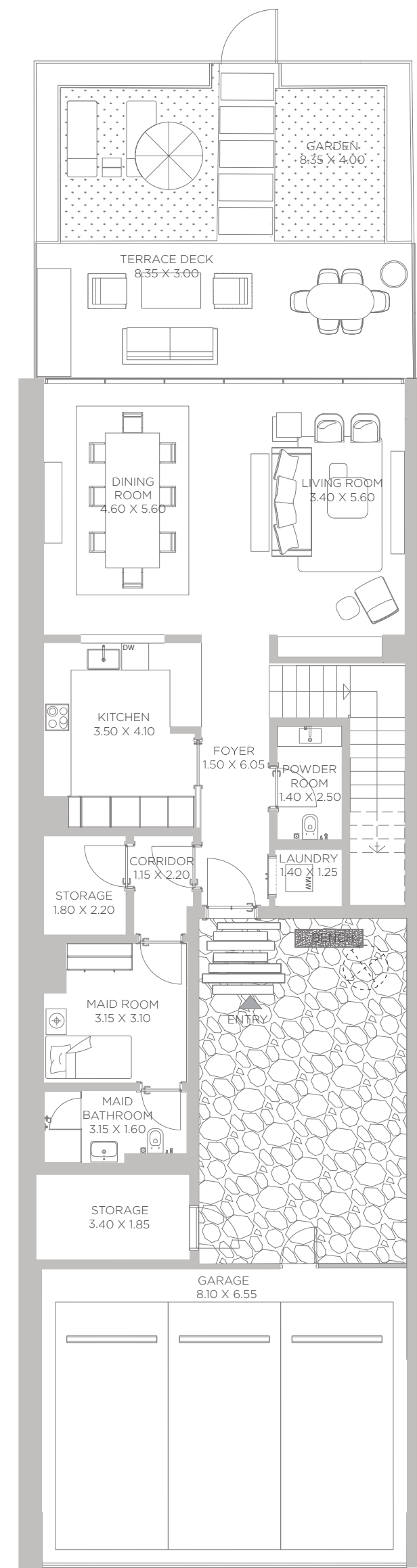
KEY PLAN



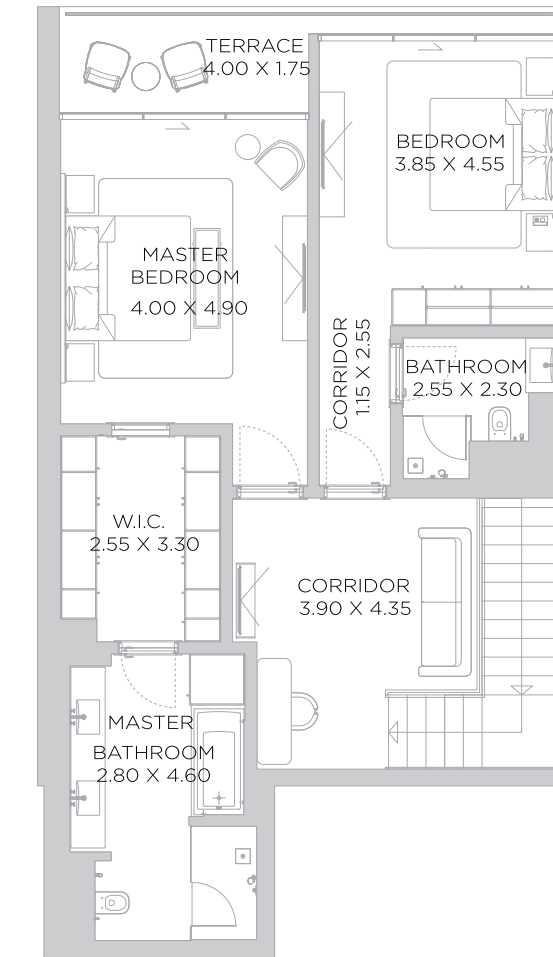
ELEVATION



GROUND FLOOR PLAN



GROUND FLOOR



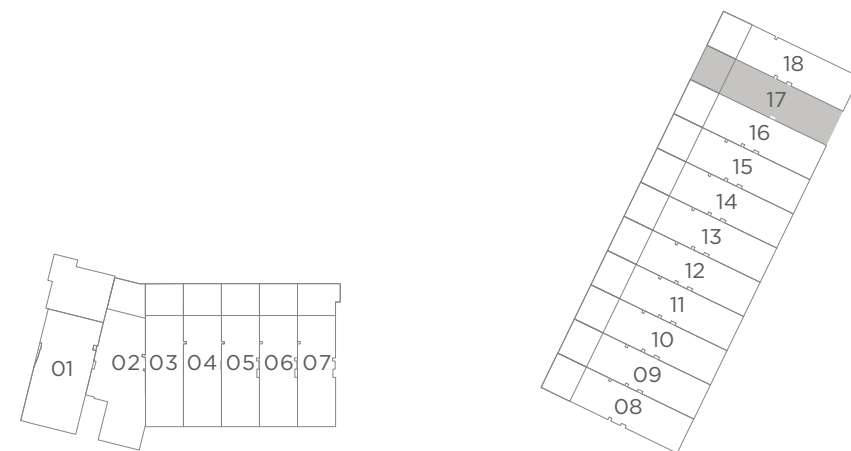
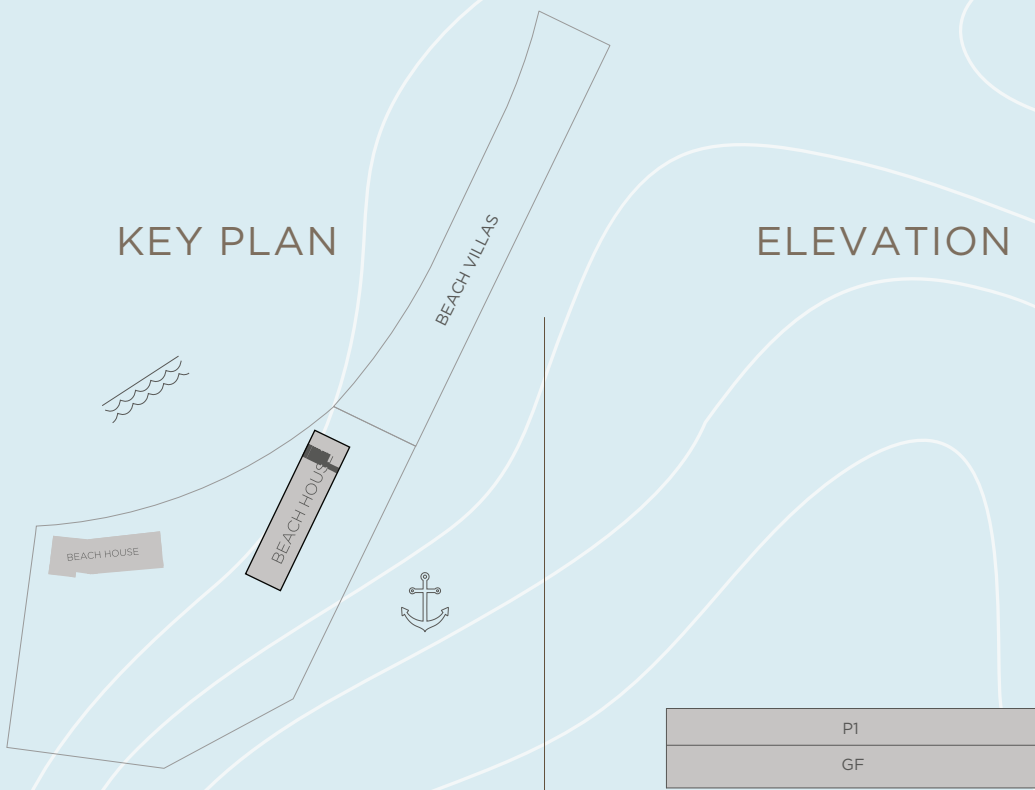
PODIUM 1

DISCLAIMER: All measurements, dimensions, coordinates and drawings, given as the Floor Plans in the literature are approximate and provided only for the purpose of marketing, illustration, information and general guidance as such drawings are not to scale. All the rooms, sizes, locations, orientations, dimensions, fixtures, fittings, finishes and specifications (including materials for, placement, size of rooms, windows, doors, balcony, furniture's inbuilt wardrobe etc.) provided in the floor plans may vary as the same have been taken from concept designs prior the actual development/construction and therefore their accuracy in relation to actual construction cannot be confirmed. Hence, we make no guarantee, warranty or representation as to the accuracy and completeness of the floor plan information as changes may be made during the development process, without notice. Always refer to latest IFC design available in the sales office for the most accurate representation of all construction details.

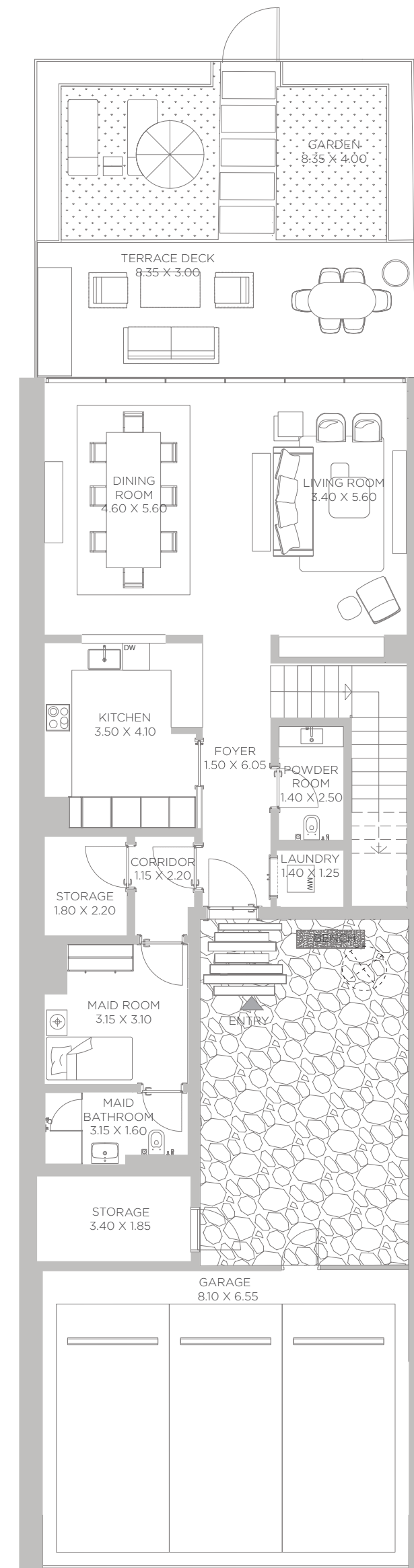
BEACH HOUSES

2 BEDROOM
 LEVEL G UNIT 17

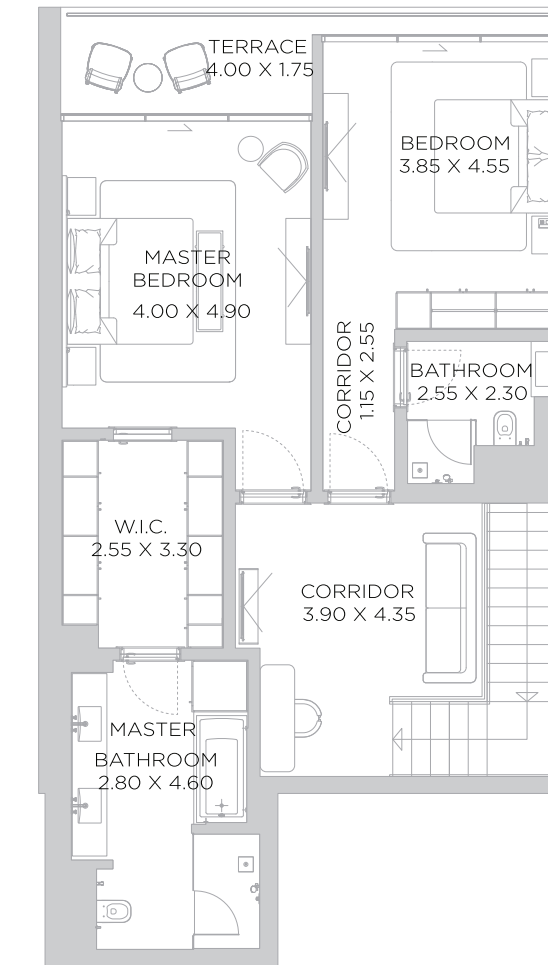
SUITE AREA	3496	SQ.FT	324.81	SQ.M.
BALCONY AREA	725	SQ.FT	67.35	SQ.M.
TOTAL AREA	4221	SQ.FT	392.16	SQ.M.



GROUND FLOOR PLAN



GROUND FLOOR



PODIUM 1

DISCLAIMER: All measurements, dimensions, coordinates and drawings, given as the Floor Plans in the literature are approximate and provided only for the purpose of marketing, illustration, information and general guidance as such drawings are not to scale. All the rooms, sizes, locations, orientations, dimensions, fixtures, fittings, finishes and specifications (including materials for, placement, size of rooms, windows, doors, balcony, furniture's inbuilt wardrobe etc.) provided in the floor plans may vary as the same have been taken from concept designs prior to the actual development/construction and therefore their accuracy in relation to actual construction cannot be confirmed. Hence, we make no guarantee, warranty or representation as to the accuracy and completeness of the floor plan information as changes may be made during the development process, without notice. Always refer to latest IFC design available in the sales office for the most accurate representation of all construction details.

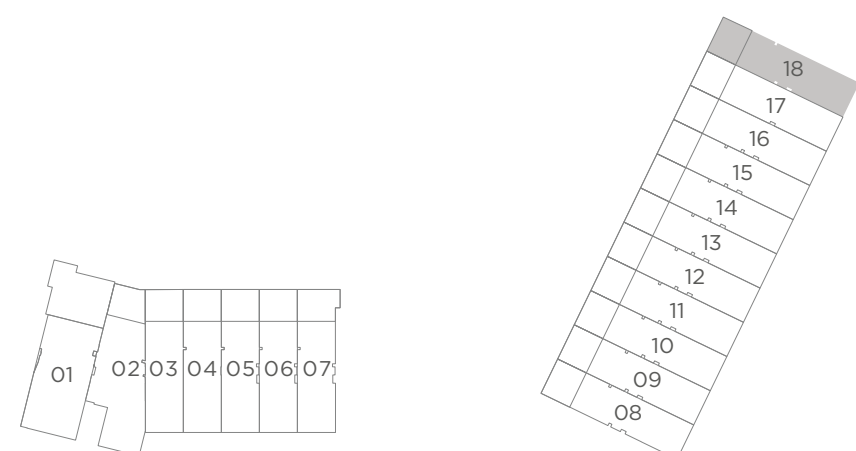
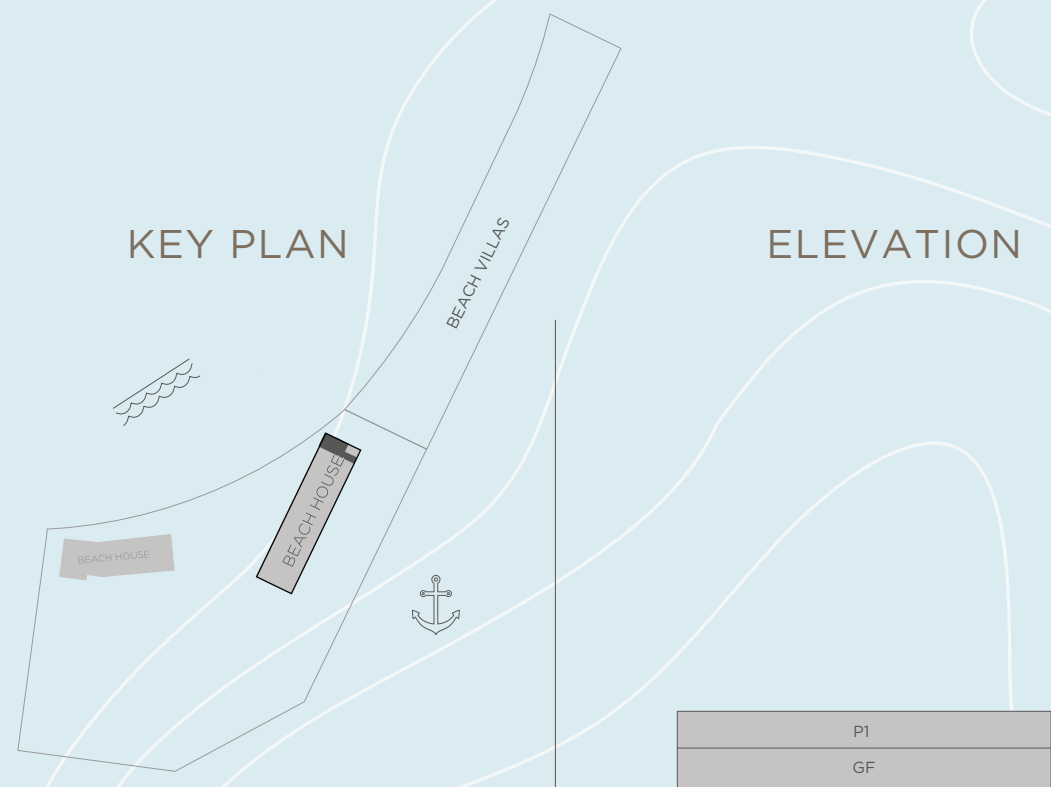
BEACH HOUSES

2 BEDROOM
 LEVEL G UNIT 18

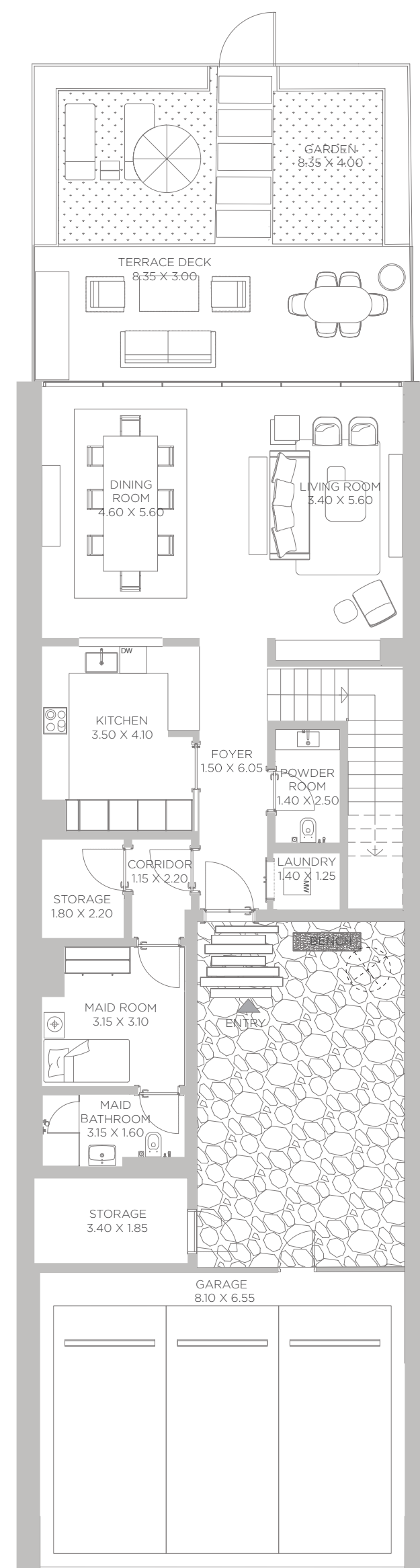
SUITE AREA	3495	SQ.FT	324.74	SQ.M.
BALCONY AREA	704	SQ.FT	65.32	SQ.M.
TOTAL AREA	4199	SQ.FT	390.06	SQ.M.

KEY PLAN

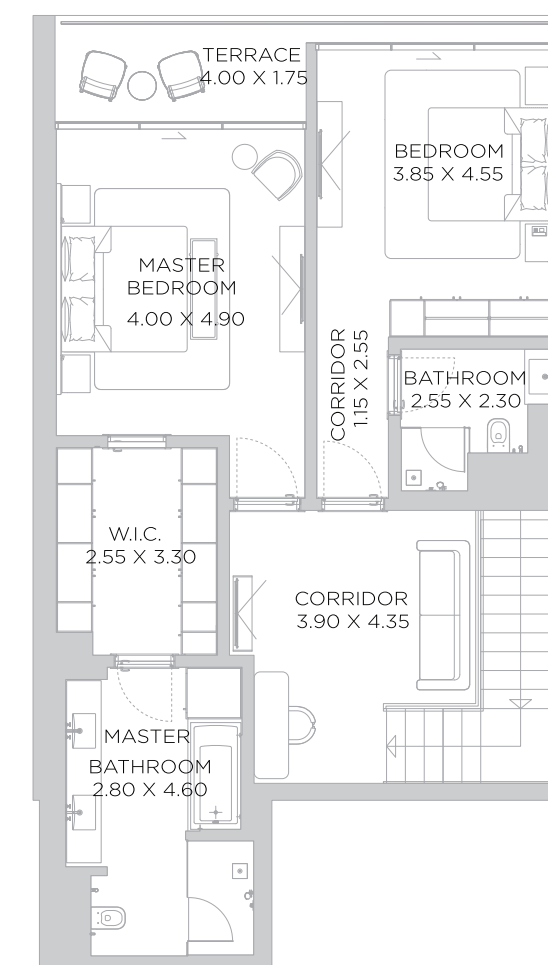
ELEVATION



GROUND FLOOR PLAN



GROUND FLOOR



PODIUM 1

DISCLAIMER: All measurements, dimensions, coordinates and drawings, given as the Floor Plans in the literature are approximate and provided only for the purpose of marketing, illustration, information and general guidance as such drawings are not to scale. All the rooms, sizes, locations, orientations, dimensions, fixtures, fittings, finishes and specifications (including materials for, placement, size of rooms, windows, doors, balcony, furniture's inbuilt wardrobe etc.) provided in the floor plans may vary as the same have been taken from concept designs prior the actual development/construction and therefore their accuracy in relation to actual construction cannot be confirmed. Hence, we make no guarantee, warranty or representation as to the accuracy and completeness of the floor plan information as changes may be made during the development process, without notice. Always refer to latest IFC design available in the sales office for the most accurate representation of all construction details.

RIXOS

DUBAI ISLANDS
HOTEL & RESIDENCES

NAKHEEL

RIXOSDUBAIISLANDSRESIDENCES.COM

800 NAKHEEL
NAKHEEL.COM

This publication is for illustrative purposes only. Some of the images shown in the document were developed with computer graphics technology (photorealistic rendering), with reference to details of the façade and elevations, common areas, private areas and interiors of the apartments, for the sole purpose of presenting a plan for future realization and/or the various, potential solutions following user customization. All furniture and art are represented for marketing and rendering purposes only. For this reason, all information, descriptions and images are purely indicative and subject to change. This document has no contractual value and is not binding on the investment company that owns the rights and information reported. The reproduction and the partial use of texts and images is forbidden without prior authorization Rixos Residences Dubai Islands ("Project") is not owned, developed, or sold by Rixos Consultancy FZE or its affiliates. Nakheel PJSC ("Licensee"), is independently owned and operated and is solely responsible for the ownership, development, and operation of the Project. Licensee uses the "Rixos" brand and certain "Rixos" trademarks pursuant to a limited, non-exclusive, non-transferable and non-sublicensable license from Rixos Consultancy FZE. Under certain circumstances, the license may be terminated or revoked according to its terms in which case neither the individual residential units ("Units") nor any part of the .Project will be identified as a "Rixos" branded project or have any rights to use the "Rixos" trademarks. Rixos Consultancy FZE does not make any representations or guarantees with respect to the Units or the Project and is not responsible for Licensee's marketing practices, advertising, and sales representations